

# HPLC Application

ID No.: 24514

## EPA 8310 on Kinetex 3.5µm PAH 100x4.6mm

**Column:** Kinetex® 3.5 µm PAH, LC Column 100 x 4.6 mm, Ea

**Dimensions:** 100 x 4.6 mm ID

**Order No:** 00D-4764-E0

**Elution Type:** Gradient

**Eluent A:** Water

**Eluent B:** Acetonitrile

Gradient Profile:	Step No.	Time (min)	Pct A	Pct B
	1	0	50	50
	2	7	0	100
	3	8	0	100
	4	9	50	50
	5	12	50	50

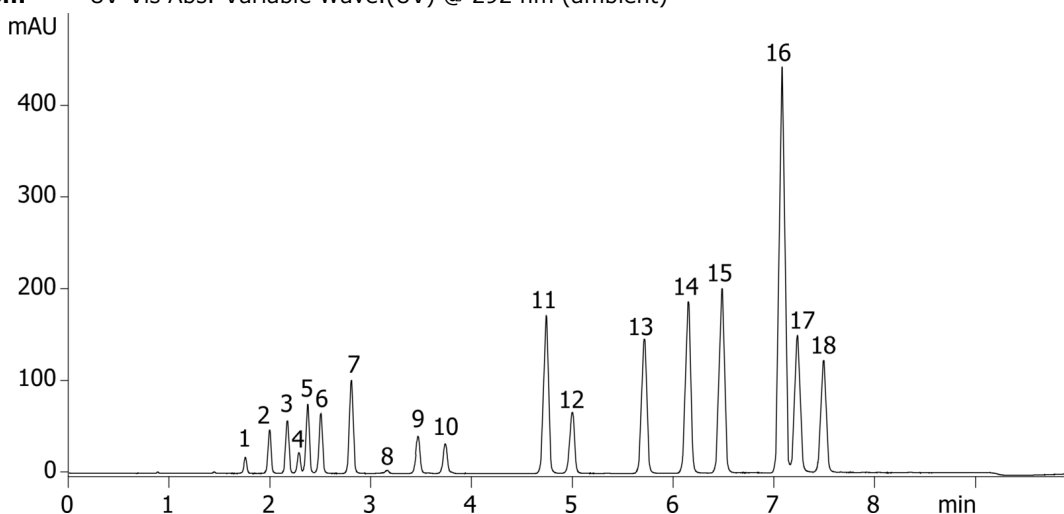
**Flow Rate:** 1.2 mL/min

**Col. Temp.:** 35 °C

**Detection:** UV-Vis Abs.-Variable Wave.(UV) @ 292 nm (ambient)



Products used in this application:



## EPA 8310 on Kinetex 3.5 $\mu$ m PAH 100x4.6mm

### ANALYTES:

- 1 Naphthalene
- 2 Acenaphthylene
- 3 1-Methylnaphthalene
- 4 2-Methylnaphthalene
- 5 Acenaphthene
- 6 Fluorene
- 7 Phenanthrene
- 8 Anthracene
- 9 Fluoranthene
- 10 Pyrene
- 11 Benzo[a]anthracene
- 12 Chrysene
- 13 Benzo[b]fluoranthene
- 14 Benzo[k]fluoranthene
- 15 Benzo[a]pyrene
- 16 Dibenzo[a,h]anthracene
- 17 Benzo[ghi]perylene
- 18 Indeno[1,2,3-cd]pyrene

