

HPLC Application

ID No.: 24516

EU 15+1 on Kinetex 3.5µm PAH 100x4.6mm

Column: Kinetex® 3.5 µm PAH, LC Column 100 x 4.6 mm, Ea

Dimensions: 100 x 4.6 mm ID

Order No: 00D-4764-E0

Elution Type: Gradient

Eluent A: Water

Eluent B: Acetonitrile

Gradient Profile:	Step No.	Time (min)	Pct A	Pct B
	1	0	50	50
	2	6	0	100
	3	11.5	0	100
	4	12	50	50
	5	14	50	50

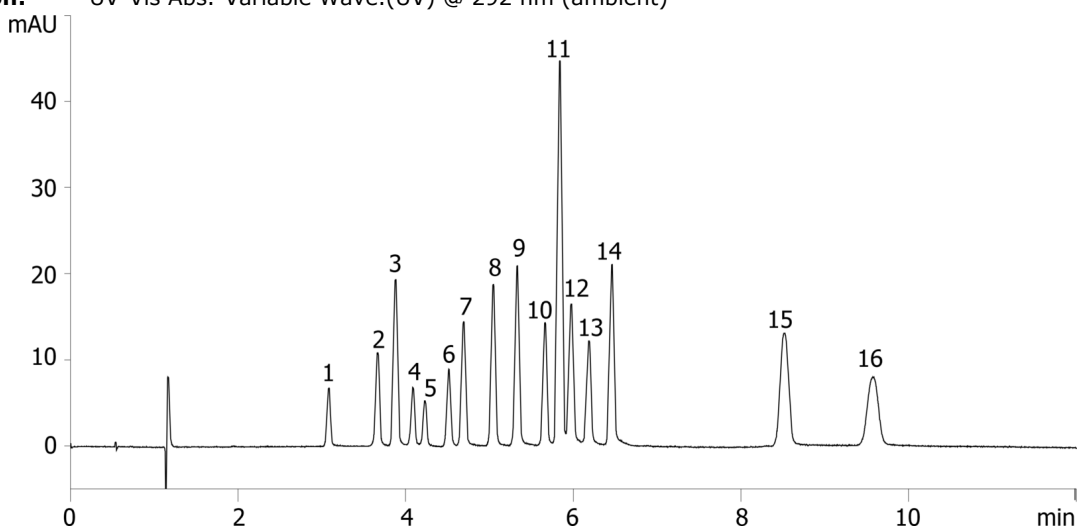
Flow Rate: 1.5 mL/min

Col. Temp.: ambient

Detection: UV-Vis Abs.-Variable Wave.(UV) @ 292 nm (ambient)



Products used in this application:



EU 15+1 on Kinetex 3.5 μ m PAH 100x4.6mm

ANALYTES:

- 1 Benzo[c]fluorene
- 2 Cyclopenta[cd]pyrene
- 3 Benzo[a]anthracene
- 4 Chrysene
- 5 5-Methylchrysene
- 6 Benzo(j)fluoranthene
- 7 Benzo[b]fluoranthene
- 8 Benzo[k]fluoranthene
- 9 Benzo[a]pyrene
- 10 Dibenzo[a,l]pyrene
- 11 Dibenz[a,h]anthracene
- 12 Benzo[ghi]perylene
- 13 Indeno[1,2,3-cd]pyrene
- 14 Dibenzo[a,e]pyrene
- 15 Dibenzo(a,i)pyrene
- 16 Dibenzo(a,h)pyrene

