

PFAS Analysis in Sediment using QuEChERS by LC-MS/MS

Column: Gemini® 3 µm C18 110 Å, LC Column 100 x 3 mm, Ea

Dimensions: 100 x 3 mm ID

Order No: 00D-4439-Y0

Elution Type: Gradient

Eluent A: 20 mM Ammonium Acetate in Water

Eluent B: Methanol

Gradient Profile:	Step No.	Time (min)	Pct A	Pct B
	1	0	90	10
	2	1.5	35	65
	3	8	5	95
	4	8.1	1	99
	5	12	1	99
	6	12.5	90	10

Flow Rate: 0.6 mL/min

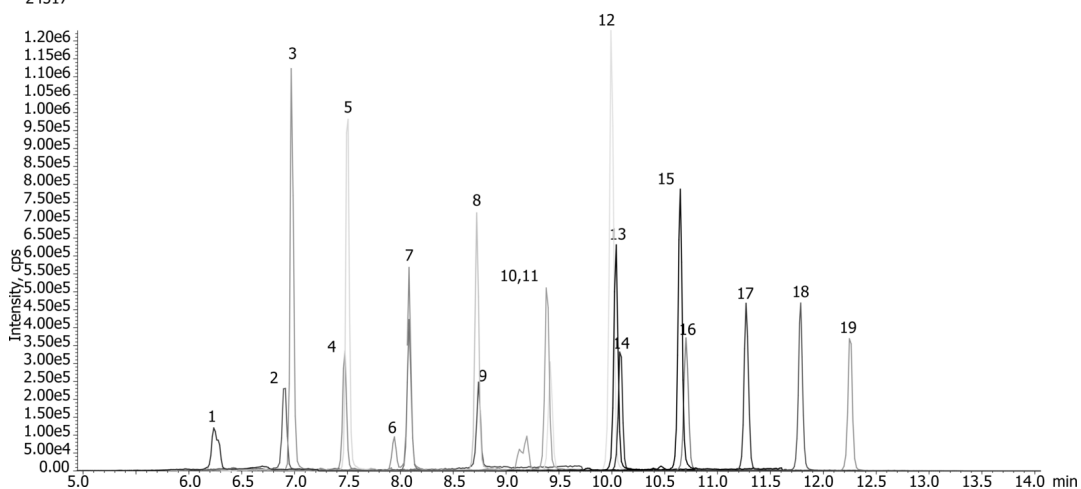
Col. Temp.: 40 °C

Detection: Mass Spectrometer (MS) @ amu (ambient)

Detector Info:

<a target="_blank"

24517



Products used in this application:



PFAS Analysis in Sediment using QuEChERS by LC-MS/MS

ANALYTES:

- 1 PFBA
- 2 PFPeA
- 3 PFBS
- 4 PFHxA
- 5 PFHxS
- 6 PFHpA
- 7 PFHpS
- 8 PFOA
- 9 PFOS
- 10 PFNA
- 11 PFDA
- 12 PFOSA
- 13 PFDS
- 14 PFUdA
- 15 PFDoA
- 16 PFTTrDA
- 17 PFTeDA
- 18 PFHxDA
- 19 PFODA

