

## Analysis of Cannabinoids using Luna Omega 3 µm Polar C18 100 x 3.0 mm

**Column:** Luna® Omega 3 µm Polar C18 100 Å, LC Column 100 x 3.0 mm, Ea

**Dimensions:** 100 x 3 mm ID

**Order No:** 00D-4760-Y0

**Elution Type:** Gradient

**Eluent A:** 0.1% formic acid

**Eluent B:** 0.1% formic acid/methanol

Gradient Profile:	Step No.	Time (min)	Pct A	Pct B
	1	0	90	10
	2	2	5	95
	3	4	5	95
	4	4.01	90	10
	5	6	90	10

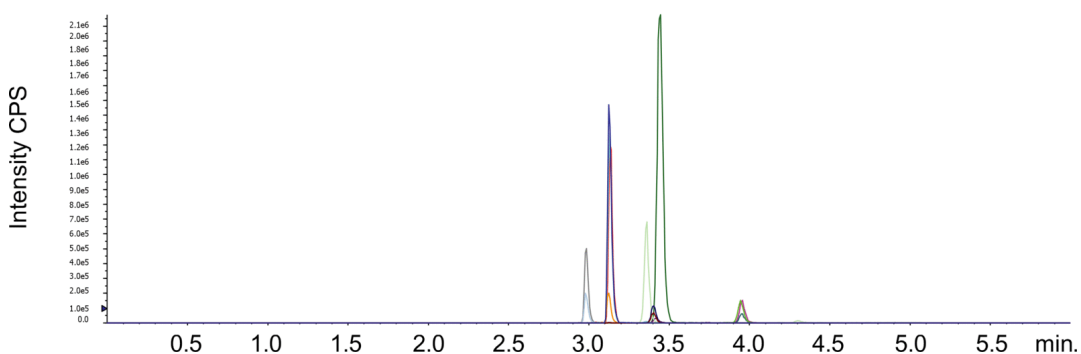
**Flow Rate:** 0.6 mL/min

**Col. Temp.:** 25 °C

**Detection:** Tandem Mass Spec (MS-MS) @ (25 °C)  
24524



Products used in this application:



### ANALYTES:

- 1 AB-FUBINACA**  
Retention Time: 2.99 min
- 2 XLR-11 4-Hydroxypentyl metabolite**  
Retention Time: 3.13 min
- 3 AB-PINACA**  
Retention Time: 3.15 min
- 4 THC-OH**  
Retention Time: 3.38 min
- 5 THC-COOH**  
Retention Time: 3.43 min
- 6 APINACA (AKB-48) 5-Hydroxypentyl metabolite**  
Retention Time: 3.47 min
- 7 THC**  
Retention Time: 3.99 min

