

# HPLC Application

ID No.: 24552

## 25-OH Vitamin D2/D3 from Plasma using Strata DE SLE and a Kinetex core-shell EVO C18 LC Column

**Column:** Kinetex<sup>®</sup> 2.6 $\mu$ m EVO C18 100 Å, LC Column 50 x 2.1 mm, Ea

**Dimensions:** 50 x 2.1 mm ID

**Order No:** 00B-4725-AN

**Elution Type:** Gradient

**Eluent A:** 0.1% formic acid in water

**Eluent B:** 0.1% formic acid in acetonitrile

Gradient Profile:	Step No.	Time (min)	Pct A	Pct B
	1	0	40	60
	2	0.83	5	95
	3	3.33	5	95
	4	3.34	40	60
	5	5.83	40	60

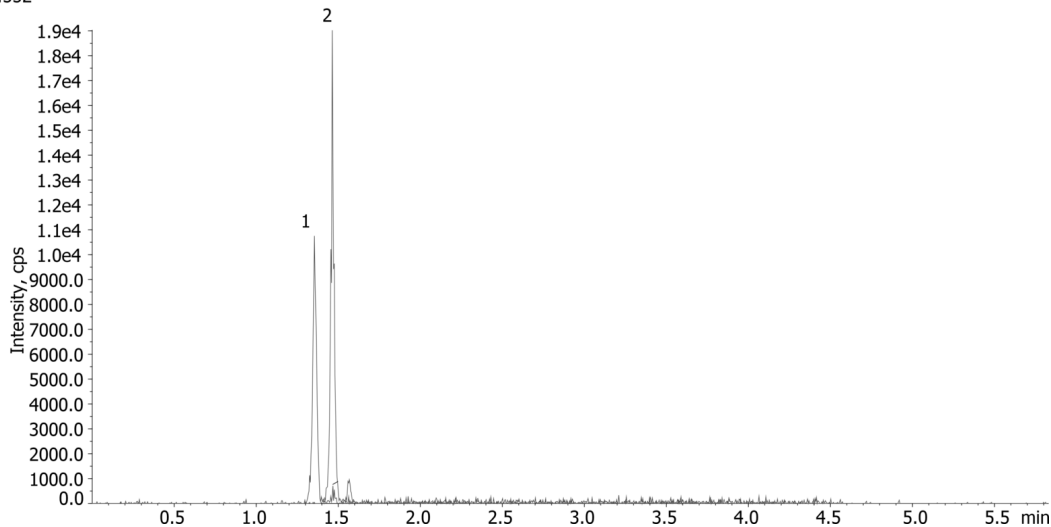
**Flow Rate:** 500  $\mu$ L/min

**Col. Temp.:** ambient

**Detection:** Tandem Mass Spec (MS-MS) @ (ambient)

**Detector Info:** <a target="\_blank" href="https://sciex.com/products/mass-spectrometers?utm\_campaign=2019%20application%20search&utm\_source=phenomenex&utm\_medium=referral">SCIEX<

24552



### ANALYTES:

1 25-OH Vitamin D3

Retention Time: 1.36 min

2 25-OH Vitamin D2

Retention Time: 1.47 min



Products used in this application:

