

HPLC Application

ID No.: 24554

EU 15+1 and EPA 8310 PAH mixtures on Kinetex 3.5µm 150x4.6mm

Column: Kinetex[®] 3.5 µm PAH, LC Column 150 x 4.6 mm, Ea

Dimensions: 150 x 4.6 mm ID

Order No: 00F-4764-E0

Elution Type: Gradient

Eluent A: Water

Eluent B: Acetonitrile

Gradient Profile:	Step No.	Time (min)	Pct A	Pct B
	1	0	50	50
	2	9	0	100
	3	17	0	100
	4	17.5	50	50
	5	20	50	50

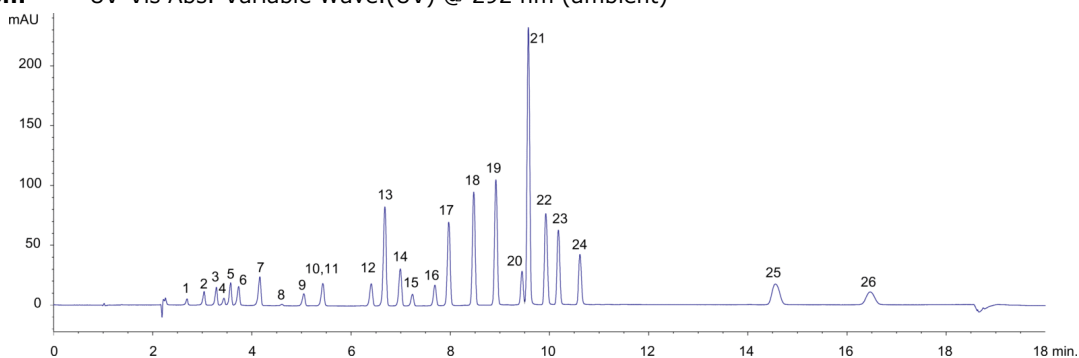
Flow Rate: 1.2 mL/min

Col. Temp.: ambient

Detection: UV-Vis Abs.-Variable Wave.(UV) @ 292 nm (ambient)



Products used in this application:



EU 15+1 and EPA 8310 PAH mixtures on Kinetex 3.5µm 150x4.6mm

ANALYTES:

- 1 Naphthalene
- 2 Acenaphthylene
- 3 1-Methylnaphthalene
- 4 2-Methylnaphthalene
- 5 Acenaphthene
- 6 Fluorene
- 7 Phenanthrene
- 8 Anthracene
- 9 Fluoranthene
- 10 Pyrene + Benzo[c]fluorene
- 11 Cyclopenta[cd]pyrene
- 12 Benzo[a]anthracene
- 13 Chrysene
- 14 5-Methylchrysene
- 15 Benzo(j)fluoranthene
- 16 Benzo[b]fluoranthene
- 17 Benzo[k]fluoranthene
- 18 Benzo[a]pyrene
- 19 Dibenzo[a,l]pyrene
- 20 Dibenzo[a,h]anthracene
- 21 Benzo[ghi]perylene
- 22 Indeno[1,2,3-cd]pyrene
- 23 Dibenzo[a,e]pyrene
- 24 Dibenzo(a,i)pyrene
- 25 Dibenzo(a,h)pyrene

