

OF Technote Fig 1(ESI+ve): Intercept Device using Knx Biphenyl 50 x 3, 2.6 um

Column: Kinetex® 2.6 µm Biphenyl 100 Å, LC Column 50 x 3.0 mm, Ea

Dimensions: 50 x 3 mm ID

Order No: 00B-4622-Y0

Elution Type: Gradient

Eluent A: 0.1% Formic Acid in DI H₂O

Eluent B: 0.1% Formic Acid in MeOH

Gradient Profile:	Step No.	Time (min)	Pct A	Pct B
	1	0	90	10
	2	4	5	95
	3	5	5	95
	4	5.01	90	10
	5	7	90	10

Flow Rate: 500 µL/min

Col. Temp.: ambient

Detection: Tandem Mass Spec (MS-MS) @ (ambient)

Detector Info: <a target="_blank"

Analyst Note: href="https://sciex.com/products/mass-spectrometers?utm_campaign=2019%20application%20search&utm_source=phenomenex&utm_medium=referral">SCIEX
Analyte panel

6-MAM

alpha-Hydroxyalprazolam

Alprazolam

Amitriptyline

Amphetamine

Benzoylcegonine

Buprenorphine

Carisoprodol

Citalopram

Cocaine

Codeine

Diazepam

EDDP

Fentanyl

Fluoxetine

Hydrocodone

Hydromorphone

Imipramine

Lorazepam

MDMA

Meperidine

mephedrone

Meprobamate

Methadone

Methamphetamine

Morphine

Naloxone

Norbuprenorphine

Nordiazepam

Norfentanyl

Norhydrocodone

Noroxycodone

Nortriptyline

Oxycodone



Products used in this application:



OF Technote Fig 1(ESI+ve): Intercept Device using Knx Biphenyl 50 x 3, 2.6 um

Analyst Note (cont.):

Oxymorphone

Paroxetine

PCP

Ritalinic Acid

Tapentadol

Temazepam

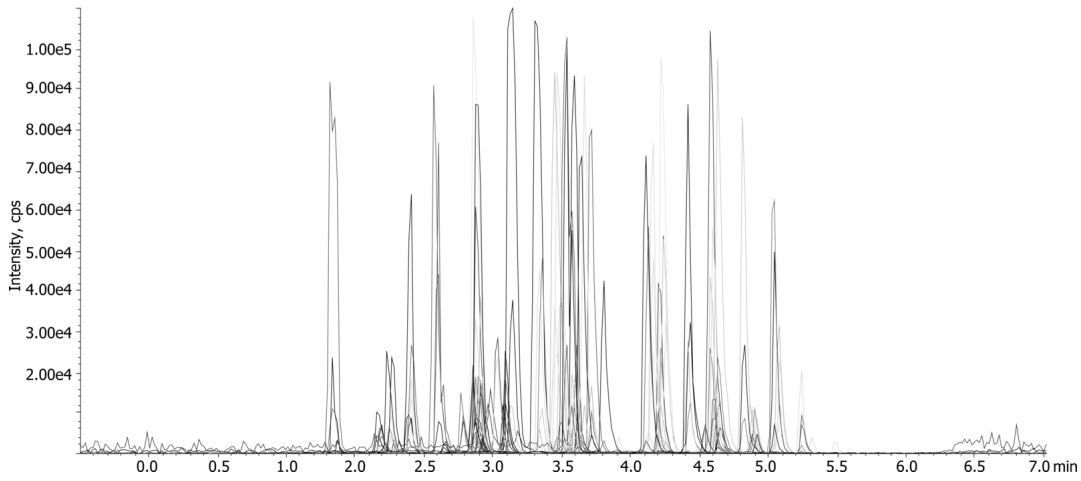
Tramadol

Zolpidem



OF Technote Fig 1(ESI+ve): Intercept Device using Knx Biphenyl 50 x 3, 2.6 μ m

24564



ANALYTES:

1 see analyte panel

