

# HPLC Application

ID No.: 24565

## OF Technote Fig 2(ESI-ve): Intercept Device using Knx Biphenyl 50 x 3, 2.6 um

**Column:** Kinetex® 2.6 µm Biphenyl 100 Å, LC Column 50 x 3.0 mm, Ea

**Dimensions:** 50 x 3 mm ID

**Order No:** 00B-4622-Y0

**Elution Type:** Gradient

**Eluent A:** 10 mM ammonium formate

**Eluent B:** Methanol

Gradient Profile:	Step No.	Time (min)	Pct A	Pct B
	1	0	50	50
	2	0.2	50	50
	3	2.5	5	95
	4	4	5	95
	5	4.1	50	50
	6	5	50	50

**Flow Rate:** 600 µL/min

**Col. Temp.:** ambient

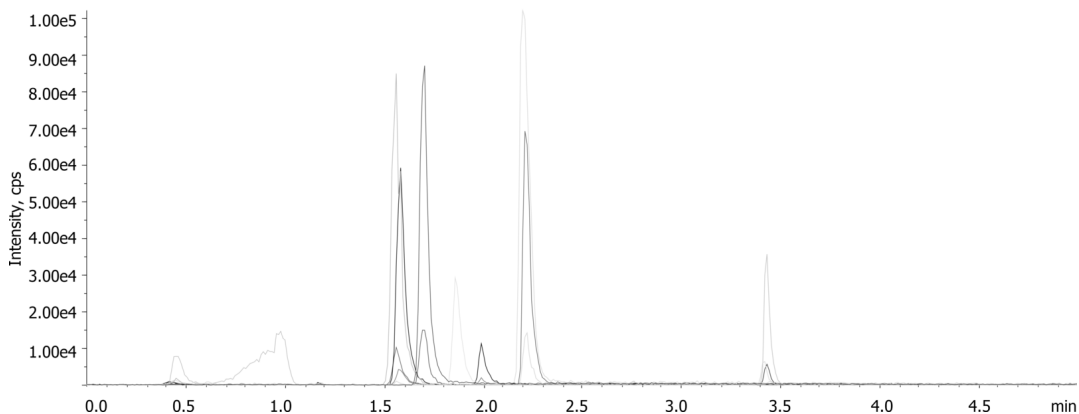
**Detection:** Tandem Mass Spec (MS-MS) @ (ambient)

**Detector Info:** <a target="\_blank"

**Analyst Note:** href="https://sciex.com/products/mass-spectrometers?utm\_campaign=2019%20application%20search&utm\_source=phenomenex&utm\_medium=referral">SCIEX<,  
Analyte panel

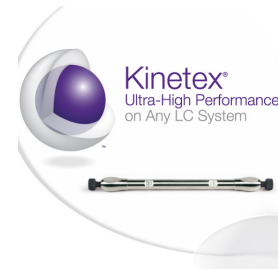
Butalbital  
Secobarbital  
Phenobarbital  
THC-COOH

24565



### ANALYTES:

1 see analyte panel



Products used in this application:

