

NSAIDs extracted on Strata DE 200uL 96 Well

Column: Kinetex® 2.6 µm C18 100 Å, LC Column 50 x 2.1 mm, Ea

Dimensions: 50 x 2.1 mm ID

Order No: 00B-4462-AN

Elution Type: Gradient

Eluent A: 0.1% formic acid in water

Eluent B: 0.1% formic acid in acetonitrile

Gradient Profile:	Step No.	Time (min)	Pct A	Pct B
	1	0	90	10
	2	2.5	0	100
	3	3.5	0	100
	4	3.51	90	10
	5	5.51	90	10

Flow Rate: 500 µL/min

Col. Temp.: ambient

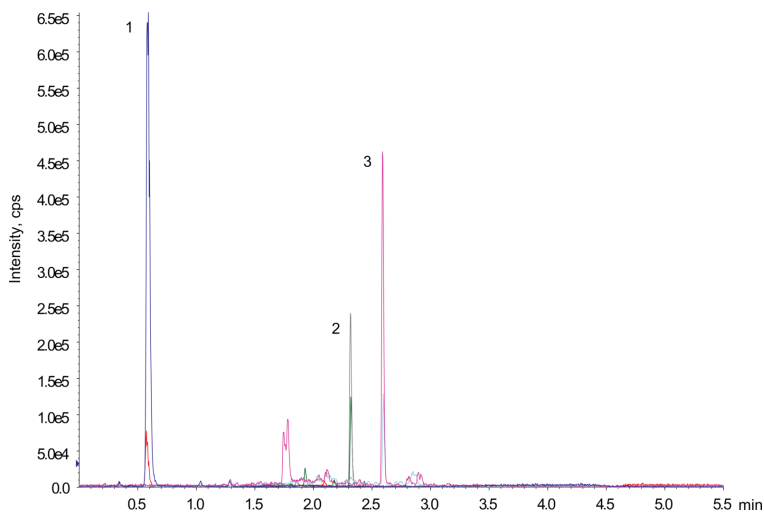
Detection: Tandem Mass Spec (MS-MS) @ (ambient)

Detector Info: SCIEX

App ID 24614



Products used in this application:



ANALYTES:

- 1 acetaminophen
Retention Time: 0.59 min
- 2 acetaminophen D7
Retention Time: 0.59 min
- 3 naproxen
Retention Time: 2.32 min
- 4 naproxen D3
Retention Time: 2.32 min
- 5 diclofenac
Retention Time: 2.6 min
- 6 diclofenac D4
Retention Time: 2.6 min

