

opiates on strata basic screen

Column: Kinetex® 2.6 µm Biphenyl 100 Å, LC Column 50 x 3.0 mm, Ea

Dimensions: 50 x 3 mm ID

Order No: 00B-4622-Y0

Elution Type: Gradient

Eluent A: 0.1% formic acid in water

Eluent B: 0.1% formic acid in acetonitrile

Gradient Profile:	Step No.	Time (min)	Pct A	Pct B
	1	0	95	5
	2	4	0	100
	3	4.5	0	100
	4	7.1	95	5

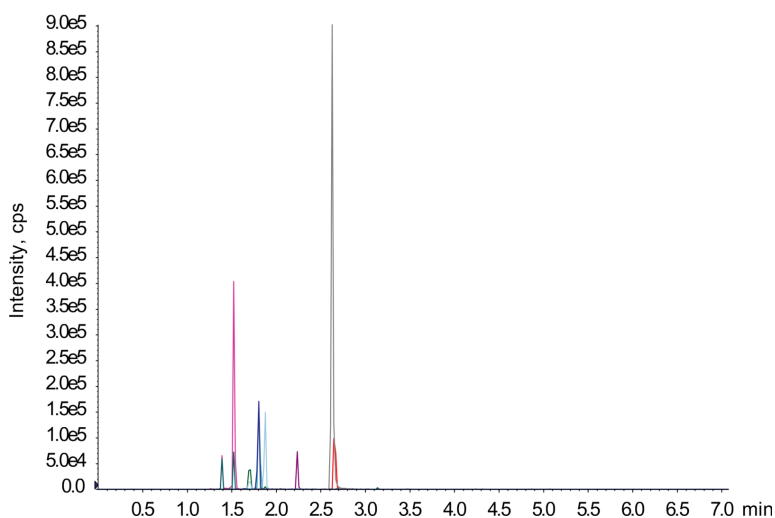
Flow Rate: 600 µL/min

Col. Temp.: ambient

Detection: Tandem Mass Spec (MS-MS) @ (ambient)
app ID 24664



Products used in this application:



ANALYTES:

- 1 6-MAM
Retention Time: 1.8 min
- 2 Buprenorphine
Retention Time: 2.66 min
- 3 codeine
Retention Time: 1.71 min
- 4 fentanyl
Retention Time: 2.63 min
- 5 hydrocodone
Retention Time: 1.88 min
- 6 hydromorphone
Retention Time: 1.53 min
- 7 morphine
Retention Time: 1.39 min
- 8 norbuprenorphine
Retention Time: 2.23 min
- 9 oxycodone
Retention Time: 1.82 min

