

HPLC Application

ID No.: 24677

Cetuximab Peptide Mapping, bioZen Peptide PS-C18

Column: bioZen[™] 1.6 µm Peptide PS-C18, LC Column 150 x 2.1 mm, Ea

Dimensions: 150 x 2.1 mm ID

Order No: 00F-4770-AN

Elution Type: Gradient

Eluent A: 0.1%TFA in water

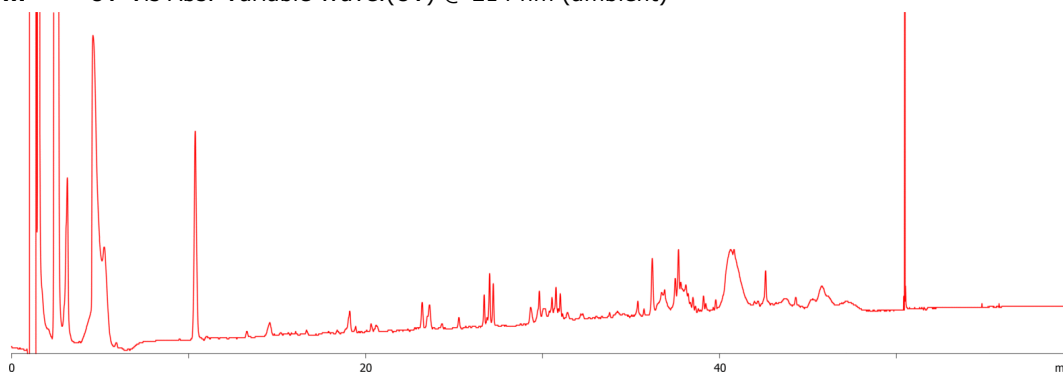
Eluent B: 0.1% TFA in acetonitrile

Gradient Profile:	Step No.	Time (min)	Pct A	Pct B
	1	0	99	1
	2	5	99	1
	3	60	50	50
	4	65	50	50
	5	70	5	95
	6	75	5	95
	7	78	5	95

Flow Rate: 0.3 mL/min

Col. Temp.: 40 °C

Detection: UV-Vis Abs.-Variable Wave.(UV) @ 214 nm (ambient)



ANALYTES:

- 1 Cetuximab

