

## Inertness Test, Stainless Steel

**Column:** bioZen<sup>™</sup> 1.8 µm SEC-3 , LC Column 150 x 4.6 mm, Ea

**Dimensions:** 150 x 4.6 mm ID

**Order No:** 00F-4772-E0

**Elution Type:** Isocratic

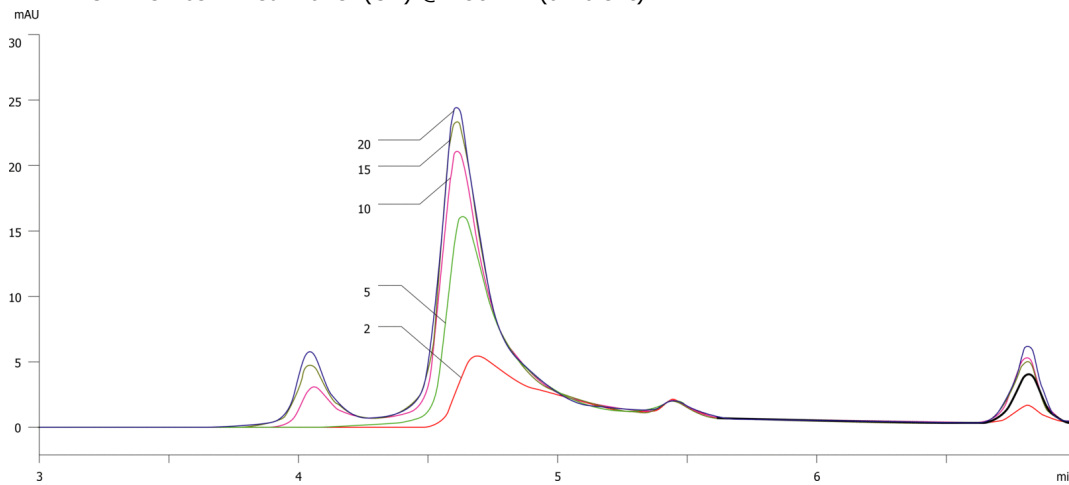
**Eluent A:** 50 mM K<sub>2</sub>PO<sub>4</sub> 100 mM Na<sub>2</sub>SO<sub>4</sub>, pH 5.0

| Gradient        | Step No. | Time (min) | Pct A |
|-----------------|----------|------------|-------|
| <b>Profile:</b> | <b>1</b> | 0          | 100   |

**Flow Rate:** 0.3 mL/min

**Col. Temp.:** ambient

**Detection:** UV-Vis Abs.-Fixed Wave. (UV) @ 280 nm (ambient)



### ANALYTES:

- 1 Gamma globulins
- 2 BSA

