

## Average DAR for Trastuzumab vcPAB-MMAE Cysteine Conjugate

**Column:** bioZen™ 3.6 µm Intact XB-C8, LC Column 150 x 2.1 mm, Ea

**Dimensions:** 150 x 2.1 mm ID

**Order No:** 00F-4766-AN

**Elution Type:** Gradient

**Eluent A:** 0.1 % TFA in Water

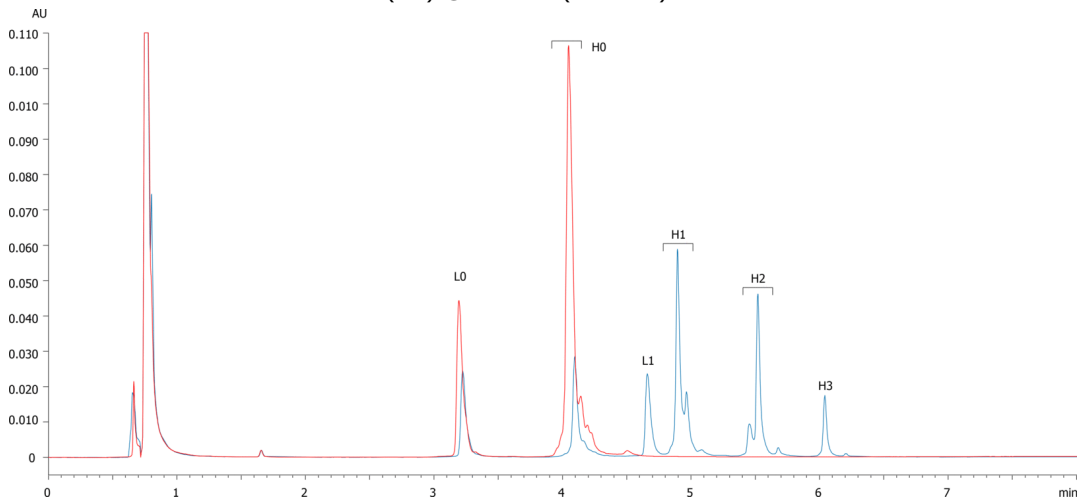
**Eluent B:** 0.1% TFA in ACN

Gradient Profile:	Step No.	Time (min)	Pct A	Pct B
	1	0	29	71
	2	1	29	71
	3	3	32	68
	4	4	32	68
	5	6	34	66
	6	10	45	55
	7	10.1	95	5
	8	10.5	15	85
	9	10.6	95	5

**Flow Rate:** 0.4 mL/min

**Col. Temp.:** ambient

**Detection:** UV-Vis Abs.-Variable Wave.(UV) @ 280 nm (ambient)



### ANALYTES:

