

HPLC Application

ID No.: 25012

16 Sugars on Luna Omega 3µm Sugar 250x4.6mm using ELSD

Column: Luna® Omega 3 µm SUGAR 100 Å, LC Column 250 x 4.6 mm, Ea

Dimensions: 250 x 4.6 mm ID

Order No: 00G-4775-E0

Elution Type: Isocratic

Eluent A: Water

Eluent B: Acetonitrile

Gradient Profile:	Step No.	Time (min)	Pct A	Pct B
	1	70	20	80

Flow Rate: 2 mL/min

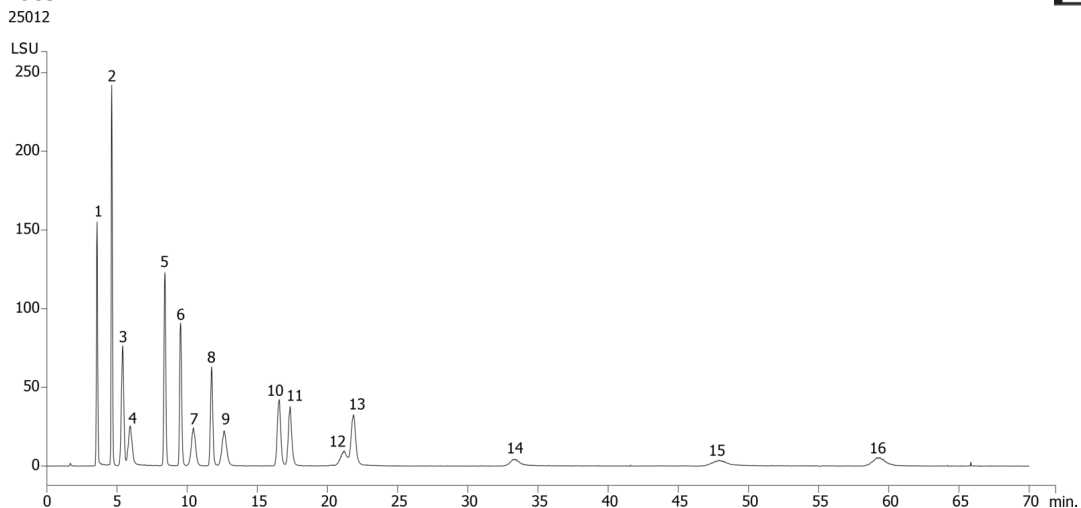
Col. Temp.: 25 °C

Detection: LC/ELSD (Light Scattering) @ (ambient)

Analyst Note: Water:Acetonitrile (20:80)



Products used in this application:



16 Sugars on Luna Omega 3 μ m Sugar 250x4.6mm using ELSD

ANALYTES:

- 1 Xylose
- 2 Fructose
- 3 Glucose
- 4 Galactose
- 5 Sucrose
- 6 Turanose
- 7 Maltose
- 8 Trehalose
- 9 Lactose
- 10 Erllose
- 11 Melezitose
- 12 Maltotriose
- 13 Raffinose
- 14 Isomaltotriose DP3
- 15 Cellotetraose
- 16 Stachyose

