

## Infliximab-dyyb Triplicate Injections on bioZen 1.8 um SEC-3

**Column:** bioZen™ 1.8 µm SEC-3 , LC Column 300 x 4.6 mm, Ea

**Dimensions:** 300 x 4.6 mm ID

**Order No:** 00H-4772-E0

**Elution Type:** Isocratic

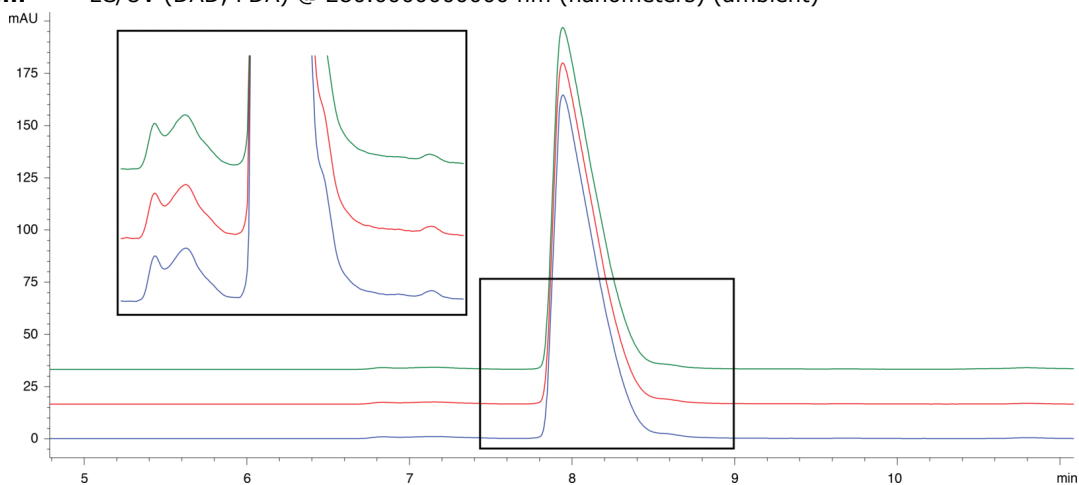
**Eluent A:** 50 mM KH<sub>2</sub>PO<sub>4</sub> 250 mM KCl, pH 6.8

Gradient	Step No.	Time (min)	Pct A
<b>Profile:</b>	<b>1</b>	0	100

**Flow Rate:** 0.35 mL/min

**Col. Temp.:** 30 °C

**Detection:** LC/UV (DAD, PDA) @ 280.000000000 nm (nanometers) (ambient)



### ANALYTES:

**1** Infliximab-dyyb

