

## Trastuzumab Peptide Mapping with Tryptic Digest on bioZen 1.6 µm Peptide PS-C18

**Column:** bioZen™ 1.6 µm Peptide PS-C18, LC Column 150 x 2.1 mm, Ea

**Dimensions:** 150 x 2.1 mm ID

**Order No:** 00F-4770-AN

**Elution Type:** Gradient

**Eluent A:** 0.1% Formic acid in water

**Eluent B:** 0.1% Formic acid in acetonitrile

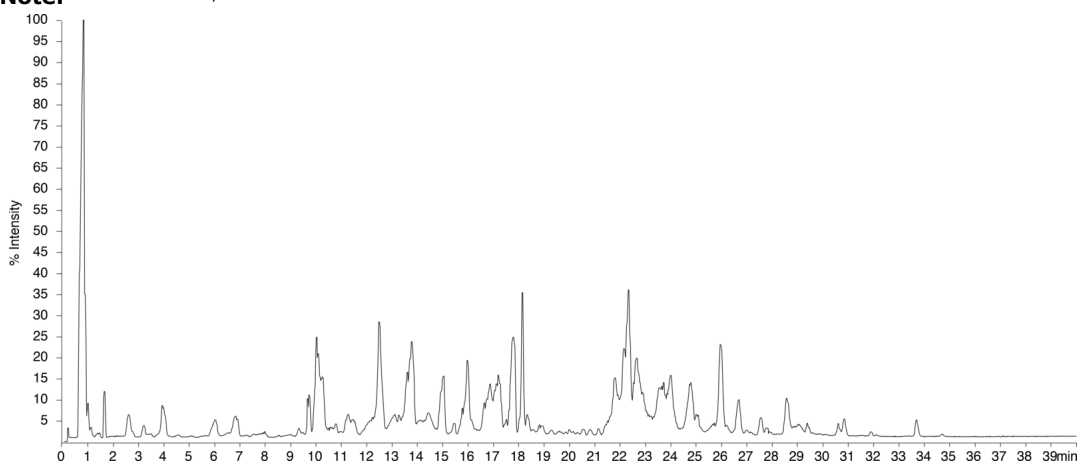
Gradient Profile:	Step No.	Time (min)	Pct A	Pct B
	1	0	99	1
	2	0.5	99	1
	3	50	50	50
	4	55	50	50
	5	56	5	95

**Flow Rate:** 0.3 mL/min

**Col. Temp.:** 40 °C

**Detection:** LC/MS @ (ambient)

**Analyst Note:** 1% acetonitrile, 0.1% formic acid in water



### ANALYTES:

- 1 Tryptic Digest of Trastuzumab

