

## Charge Variants of Cetuximab using Salt Gradient on bioZen 6 µm WCX

**Column:** bioZen™ 6µm WCX, LC Column 250 x 4.6 mm, Ea

**Dimensions:** 250 x 4.6 mm ID

**Order No:** 00G-4777-E0

**Elution Type:** Gradient

**Eluent A:** 20 mM MES, pH 5.6

**Eluent B:** 20 mM MES, 300 mM NaCl, pH 5.6

Gradient Profile:	Step No.	Time (min)	Pct A	Pct B
	1	0	85	15
	2	1	85	15
	3	31	55	45
	4	31.1	0	100
	5	34	0	100
	6	35	85	15

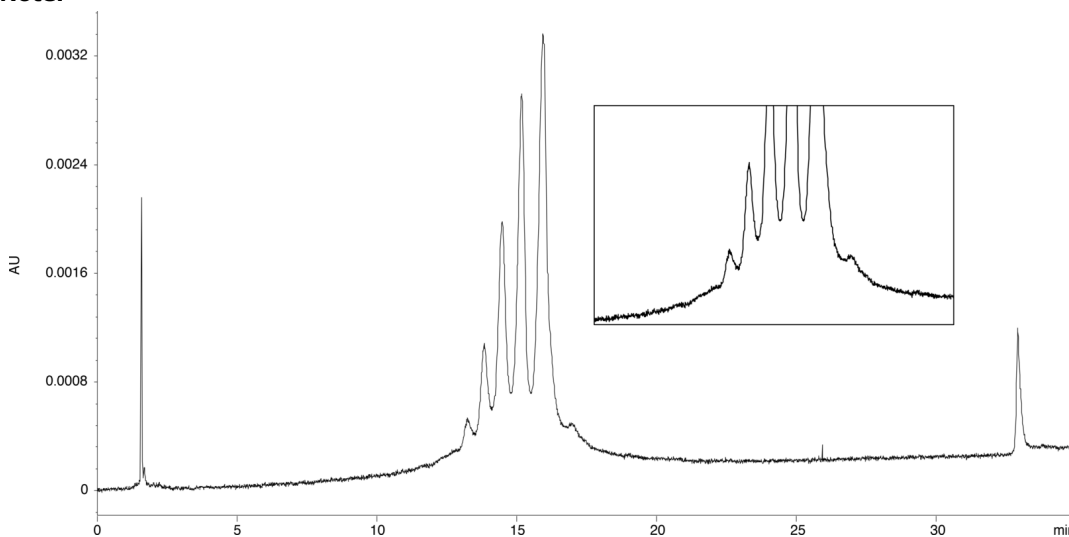


**Flow Rate:** 1 mL/min

**Col. Temp.:** 25 °C

**Detection:** LC/UV (DAD, PDA) @ 280.000000000 nm (nanometers) (ambient)

**Analyst Note:** \*Sample graciously gifted by Catherine Bladen, Absolute Antibody



### ANALYTES:

1 Cetuximab

