

## Charge Variants of Trastuzumab using pH Gradient on bioZen 6 µm WCX

**Column:** bioZen™ 6µm WCX, LC Column 250 x 4.6 mm, Ea

**Dimensions:** 250 x 4.6 mm ID

**Order No:** 00G-4777-E0

**Elution Type:** Gradient

**Eluent A:** CX-1, pH 5.6

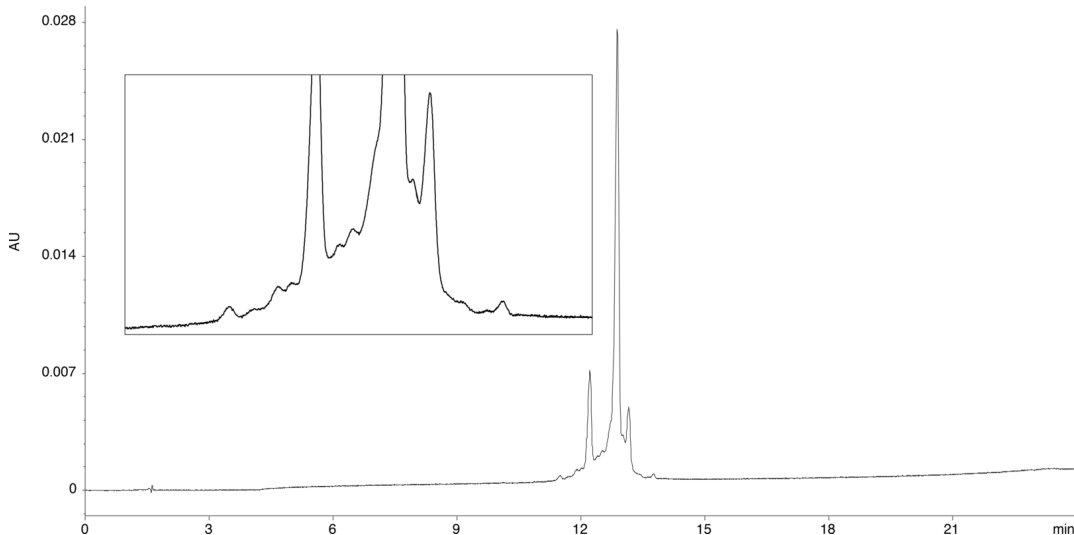
**Eluent B:** CX-2, pH 10.2

Gradient Profile:	Step No.	Time (min)	Pct A	Pct B
	1	0	100	0
	2	1	100	0
	3	21	0	100
	4	23	0	100
	7	24	100	0

**Flow Rate:** 1 mL/min

**Col. Temp.:** 25 °C

**Detection:** LC/UV (DAD, PDA) @ 280.000000000 nm (nanometers) (ambient)



### ANALYTES:

1 Trastuzumab

