

# HPLC Application

ID No.: 25174

## 5 Sugar Alcohols on Luna Omega 3u SUGAR 250x4.6mm

**Column:** Luna® Omega 3 µm SUGAR 100 Å, LC Column 250 x 4.6 mm, Ea

**Dimensions:** 250 x 4.6 mm ID

**Order No:** 00G-4775-E0

**Elution Type:** Gradient

**Eluent A:** 10mM Ammonium Acetate pH 6.4

**Eluent B:** Acetonitrile

Gradient Profile:	Step No.	Time (min)	Pct A	Pct B
	1	0	16	84
	2	12	16	84
	3	18	35	65
	4	20	35	65
	5	21	16	84
	6	24	16	84

**Flow Rate:** 1.5 mL/min

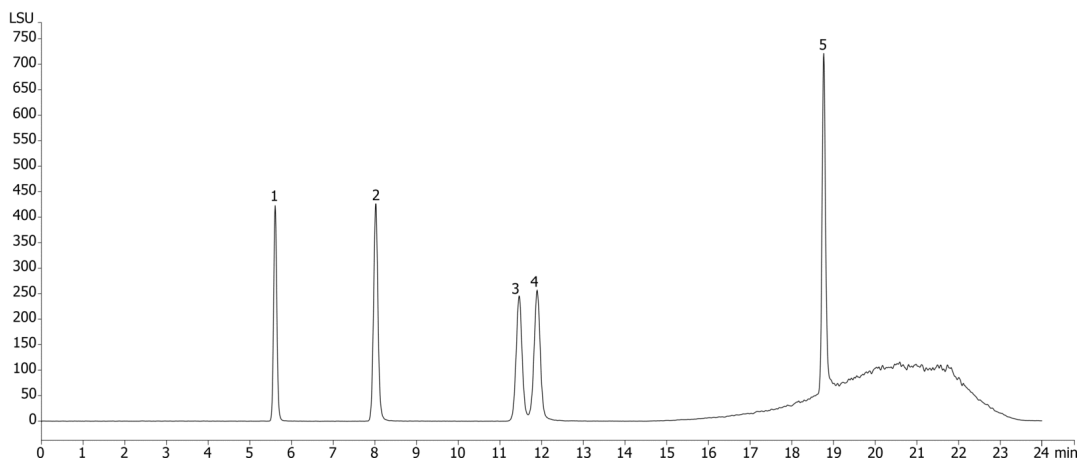
**Col. Temp.:** 25 °C

**Detection:** LC/ELSD (Light Scattering) @ (50 °C)

25174



Products used in this application:



### ANALYTES:

- 1** Erythritol  
Retention Time: 5.609 min
- 2** Xylitol  
Retention Time: 8.021 min
- 3** Sorbitol  
Retention Time: 11.46 min
- 4** Mannitol  
Retention Time: 11.89 min
- 5** Maltitol  
Retention Time: 18.765 min

