

# HPLC Application

ID No.: 25248

## Nimesulide in formulation gel using Kinetex 2.6µm Polar C18 150x.4.6mm

**Column:** Kinetex<sup>®</sup> 2.6 µm Polar C18 100 Å, LC Column 150 x 4.6 mm, Ea

**Dimensions:** 150 x 4.6 mm ID

**Order No:** 00F-4759-E0

**Elution Type:** Gradient

**Eluent A:** 30mM Potassium Phosphate pH 3.0

**Eluent B:** Acetonitrile

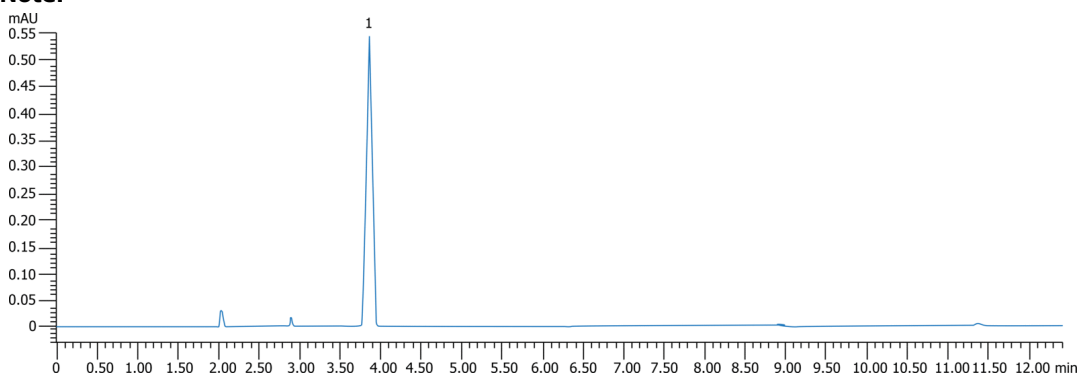
Gradient Profile:	Step No.	Time (min)	Pct A	Pct B
	1	0	50	50
	2	8	20	80
	3	9	20	80
	4	10	50	50
	5	12	50	50

**Flow Rate:** 1 mL/min

**Col. Temp.:** 40 °C

**Detection:** LC/UV (DAD, PDA) @ 254.000000000 nm (nanometers) (30 °C)

**Analyst Note:** Gel formulation extraction



Products used in this application:



### ANALYTES:

1 Excepiant

Retention Time: 2.81 min

2 Nimesulide

Retention Time: 3.722 min

