

NDMA and NDEA by GC/MS on a ZB-624Plus

Column: Zebron ZB-624plus, GC Cap. Column 30m x 0.25mm x 1.4um, Ea

Phase: Proprietary Pesticides Phase

Dimensions: 30 meters x 0.25 mm x 1.4 µm

Order No: 7HG-G040-27

Oven Profile: 60°C for 1 min to 240°C @ 20°C/min 240°C for 1 min

Carrier Gas: Constant Flow Helium, 36.1 cm/sec

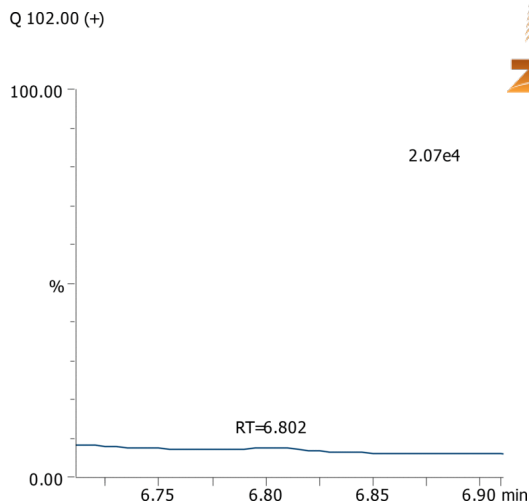
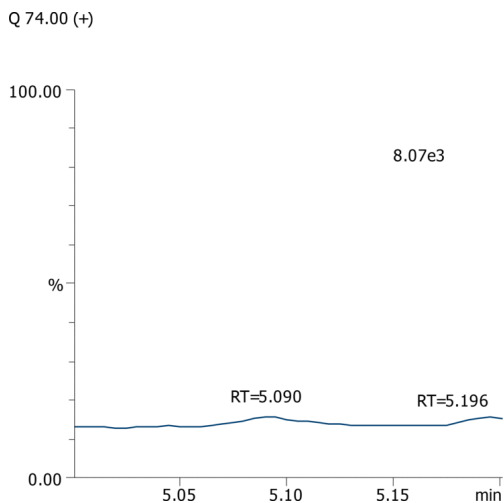
Injection: Split 10:1 1 µL @ 150°C

Detection: GC/MS (250°C)

Analyst Note: Pharmaceutical API API is dissolved in 1 mL of DMSO in a 20 mL headspace vial.



Products used in this application:



ANALYTES:

- 1 NDMA
Retention Time: 5.094 min
- 2 NDEA
Retention Time: 6.808 min