

## Naphthalene Marker Standards on ZB-DHA-PONA 100m x 0.25mm x 0.5um

**Column:** Zebron ZB-DHA-PONA, GC Cap. Column 100m x 0.25mm x 0.5um , Ea

**Phase:**

**Dimensions:** 100 meters x 0.25 mm x 0.5 µm

**Order No:** 7MG-G042-17

**Oven Profile:** 35°C for 14 min to 60°C @ 1.1°C/min 60°C for 19 min to 60°C @ 1.1°C/min 60°C for 19 min to 280°C @ 2°C/min 280°C for 5 min to

**Carrier Gas:** Constant Flow Helium, 1.55 mL/min

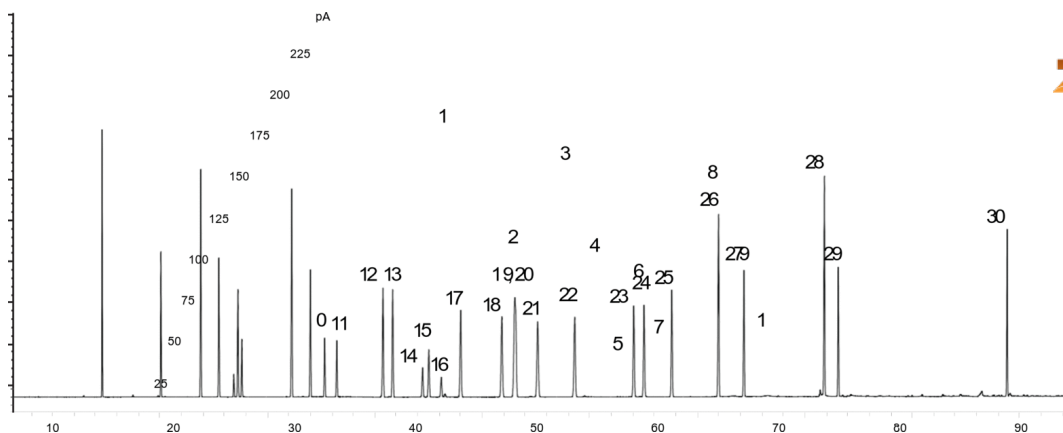
**Injection:** Split 40:1 0.2 µL @ 300°C

**Detection:** GC/FID (320°C)

**Analyst Note:** The paraffins standard was first diluted 100:1 in pentane and then run with a 40:1 split to avoid column



Products used in this application:



## Naphthalene Marker Standards on ZB-DHA-PONA 100m x 0.25mm x 0.5um

### ANALYTES:

- |                                    |                                   |
|------------------------------------|-----------------------------------|
| 1 Methylcyclohexane                | 41 cis-1,2-Dimethylcyclohexane    |
| 2 Ethylcyclopentane                | 42 n-Propylcyclopentane           |
| 3 ctc-1,2,4-Trimethylcyclopentane  | 43 ccc-1,3,5-Trimethylcyclohexane |
| 4 ctc-1,2,3-Trimethylcyclopentane  | 44 1,1,4-Trimethylcyclohexane     |
| 5 cct-1,2,4-Trimethylcyclopentane  | 45 ctt-1,2,4-Trimethylcyclohexane |
| 6 trans-1,4-Dimethylcyclohexane    | 46 ctc-1,2,4-Trimethylcyclohexane |
| 7 1-Ethyl-1-methylcyclopentane     | 47 1,1,2-Trimethylcyclohexane     |
| 8 trans-1,2-Dimethylcyclohexane    | 48 Isobutylcyclopentane           |
| 9 ccc-1,2,3-Trimethylcyclopentane  | 49 Isopropylcyclohexane           |
| 10 Isopropylcyclopentane           | 50 n-Butylcyclopentane            |
| 11 cis-1,2-Dimethylcyclohexane     | 51 Isobutylcyclohexane            |
| 12 n-Propylcyclopentane            | 52 t-1-Methyl-2-propylcyclohexane |
| 13 ccc-1,3,5-Trimethylcyclohexane  | 53 t-1-Methyl-2-(4MP)cyclopentane |
| 14 1,1,4-Trimethylcyclohexane      |                                   |
| 15 ctt-1,2,4-Trimethylcyclohexane  |                                   |
| 16 Cyclopentane                    |                                   |
| 17 ctc-1,2,4-Trimethylcyclohexane  |                                   |
| 18 Methylcyclopentane              |                                   |
| 19 1,1,2-Trimethylcyclohexane      |                                   |
| 20 Cyclohexane                     |                                   |
| 21 Isobutylcyclopentane            |                                   |
| 22 1,1-Dimethylcyclopentane        |                                   |
| 23 Isopropylcyclohexane            |                                   |
| 24 cis-1,3-Dimethylcyclopentane    |                                   |
| 25 n-Butylcyclopentane             |                                   |
| 26 trans-1,3-Dimethylcyclopentane  |                                   |
| 27 Isobutylcyclohexane             |                                   |
| 28 trans-1,2-Dimethylcyclopentane  |                                   |
| 29 t-1-Methyl-2-propylcyclohexane  |                                   |
| 30 Methylcyclohexane               |                                   |
| 31 t-1-Methyl-2-(4MP)cyclopentane  |                                   |
| 32 Ethylcyclopentane               |                                   |
| 33 ctc-1,2,4-Trimethylcyclopentane |                                   |
| 34 ctc-1,2,3-Trimethylcyclopentane |                                   |
| 35 cct-1,2,4-Trimethylcyclopentane |                                   |
| 36 trans-1,4-Dimethylcyclohexane   |                                   |
| 37 1-Ethyl-1-methylcyclopentane    |                                   |
| 38 trans-1,2-Dimethylcyclohexane   |                                   |
| 39 ccc-1,2,3-Trimethylcyclopentane |                                   |
| 40 Isopropylcyclopentane           |                                   |

