

HPLC Application

ID No.: 25332

Lux i-Amylose-3 Separation for Troger's Base

Column: Lux[®] 5 µm i-Amylose-3, LC Column 250 x 4.6 mm, Ea

Dimensions: 250 x 4.6 mm ID

Order No: 00G-4779-E0

Elution Type: Isocratic

Eluent A: Hexane

Eluent B: Isopropanol

Eluent C: Diethylamine

Gradient Profile:	Step No.	Time (min)	Pct A	Pct B	Pct C
	1	10	80	20	0.1

Flow Rate: 1 mL/min

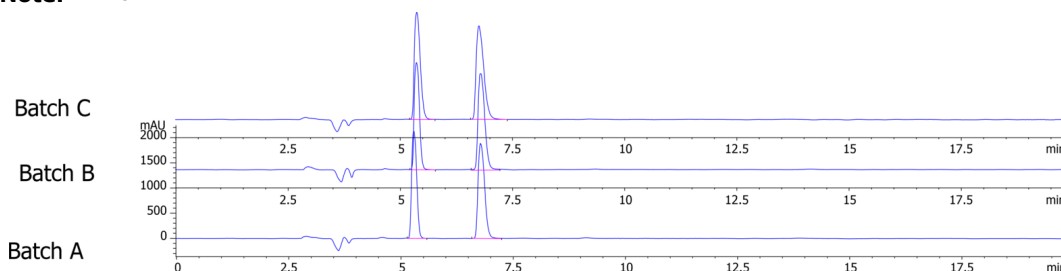
Col. Temp.: 25 °C

Detection: LC/UV (DAD, PDA) @ 220.000000000 nm (nanometers) (ambient)

Analyst Note: 2 mg/mL in Ethanol



Products used in this application:



ANALYTES:

- 1 Troger's Base
Retention Time: 5.284 min
- 2 Troger's Base
Retention Time: 6.771 min

