

Lux i-Amylose-3 Separation for Tetramisole

Column: Lux® 5 µm i-Amylose-3, LC Column 250 x 4.6 mm, Ea

Dimensions: 250 x 4.6 mm ID

Order No: 00G-4779-E0

Elution Type: Isocratic

Eluent A: Hexane

Eluent B: Isopropanol

Eluent C: Diethylamine

Gradient Profile:	Step No.	Time (min)	Pct A	Pct B	Pct C
	1	20	80	20	0.1

Flow Rate: 1 mL/min

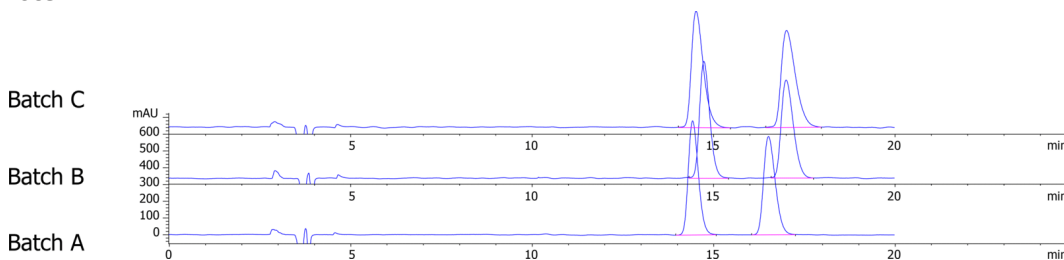
Col. Temp.: 25 °C

Detection: LC/UV (DAD, PDA) @ 220.000000000 nm (nanometers) (ambient)

Analyst Note: 2 mg/mL in Ethanol



Products used in this application:



ANALYTES:

1 Tetramisole

Retention Time: 14.418 min

2 Tetramisole

Retention Time: 16.511 min

