

# HPLC Application

ID No.: 25341

## Lux i-Amylose-3 Separation for Metalaxyl

**Column:** Lux<sup>®</sup> 5 µm i-Amylose-3, LC Column 250 x 4.6 mm, Ea

**Dimensions:** 250 x 4.6 mm ID

**Order No:** 00G-4779-E0

**Elution Type:** Isocratic

**Eluent A:** 5mM Ammonium Acetate +0.05% Formic Acid

**Eluent B:** Acetonitrile

Gradient Profile:	Step No.	Time (min)	Pct A	Pct B
	1	16	55	45

**Flow Rate:** 0.6 mL/min

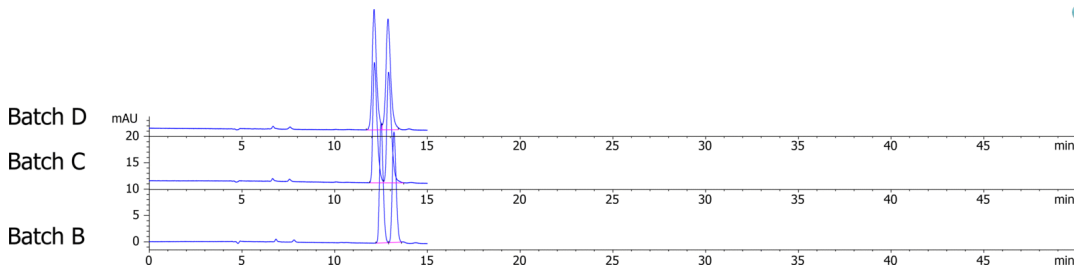
**Col. Temp.:** 25 °C

**Detection:** LC/UV (DAD, PDA) @ 254.000000000 nm (nanometers) (ambient)

**Analyst Note:** 2 mg/mL in Ethanol



Products used in this application:



### ANALYTES:

1 Metalaxyl

Retention Time: 12.501 min

2 Metalaxyl

Retention Time: 13.196 min

