

# HPLC Application

ID No.: 25342

## Lux i-Amylose-3 Separation for Thalidomide

**Column:** Lux<sup>®</sup> 5 µm i-Amylose-3, LC Column 250 x 4.6 mm, Ea

**Dimensions:** 250 x 4.6 mm ID

**Order No:** 00G-4779-E0

**Elution Type:** Isocratic

**Eluent A:** Acetonitrile

**Eluent B:** Diethylamine

Gradient Profile:	Step No.	Time (min)	Pct A	Pct B
	1	14	100	0.1

**Flow Rate:** 1 mL/min

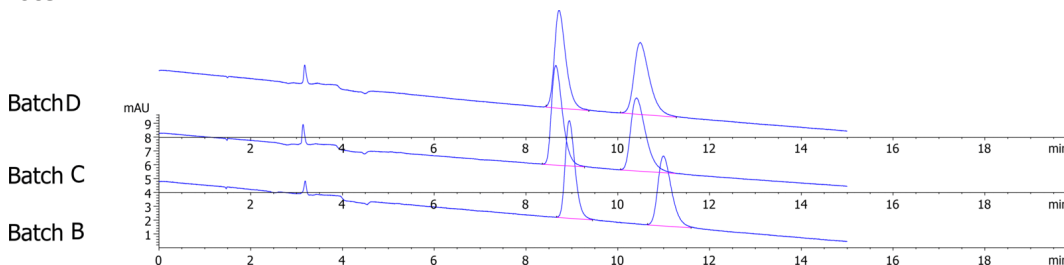
**Col. Temp.:** 25 °C

**Detection:** LC/UV (DAD, PDA) @ 254.000000000 nm (nanometers) (ambient)

**Analyst Note:** 2 mg/mL in Ethanol



Products used in this application:



### ANALYTES:

1 Thalidomide

Retention Time: 8.944 min

2 Thalidomide

Retention Time: 10.995 min

