

HPLC Application

ID No.: 25345

Lux i-Amylose-3 Separation for Propafenone

Column: Lux[®] 5 μ m i-Amylose-3, LC Column 250 x 4.6 mm, Ea

Dimensions: 250 x 4.6 mm ID

Order No: 00G-4779-E0

Elution Type: Isocratic

Eluent A: Methanol

Eluent B: Diethylamine

Gradient Profile:	Step No.	Time (min)	Pct A	Pct B
	1	10	100	0.1

Flow Rate: 1 mL/min

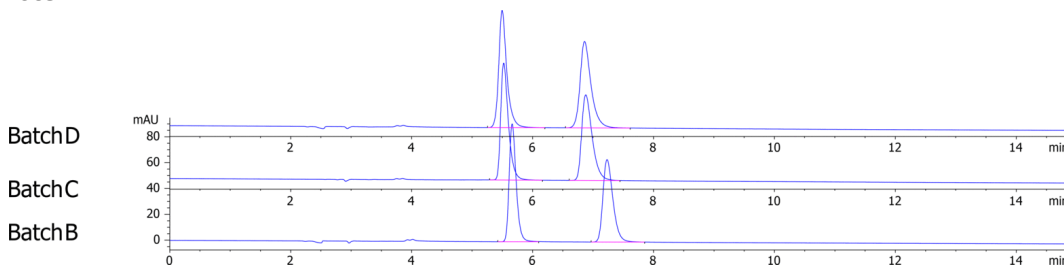
Col. Temp.: 25 °C

Detection: LC/UV (DAD, PDA) @ 254.000000000 nm (nanometers) (ambient)

Analyst Note: 2 mg/mL in Ethanol



Products used in this application:



ANALYTES:

1 Propafenone

Retention Time: 5.663 min

2 Propafenone

Retention Time: 7.232 min

