

HPLC Application

ID No.: 25360

Lux i-Amylose-3 Separation for Chlorpheniramine

Column: Lux[®] 5 µm i-Amylose-3, LC Column 250 x 4.6 mm, Ea

Dimensions: 250 x 4.6 mm ID

Order No: 00G-4779-E0

Elution Type: Isocratic

Eluent A: Water

Eluent B: Acetonitrile

Eluent C: Diethylamine

Gradient Profile:	Step No.	Time (min)	Pct A	Pct B	Pct C
	1	18	50	50	0.1

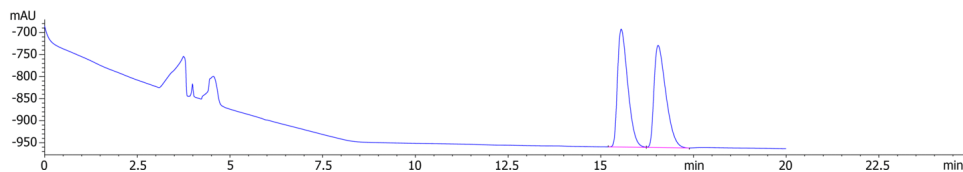
Flow Rate: 1 mL/min

Col. Temp.: 25 °C

Detection: LC/UV (DAD, PDA) @ 254.000000000 nm (nanometers) (ambient)

Analyst Note: 2 mg/mL in Ethanol

Batch B



Products used in this application:



ANALYTES:

- 1 Chlorpheniramine
Retention Time: 15.551 min
- 2 Chlorpheniramine
Retention Time: 16.546 min

