

# HPLC Application

ID No.: 25366

## Lux i-Cellulose-5 Separation for Diniconazole

**Column:** Lux<sup>®</sup> 5 µm i-Cellulose-5, LC Column 250 x 4.6 mm, Ea

**Dimensions:** 250 x 4.6 mm ID

**Order No:** 00G-4756-E0

**Elution Type:** Isocratic

**Eluent A:** Water

**Eluent B:** Acetonitrile

**Eluent C:** Diethylamine

Gradient Profile:	Step No.	Time (min)	Pct A	Pct B	Pct C
	1	8	35	65	0.1

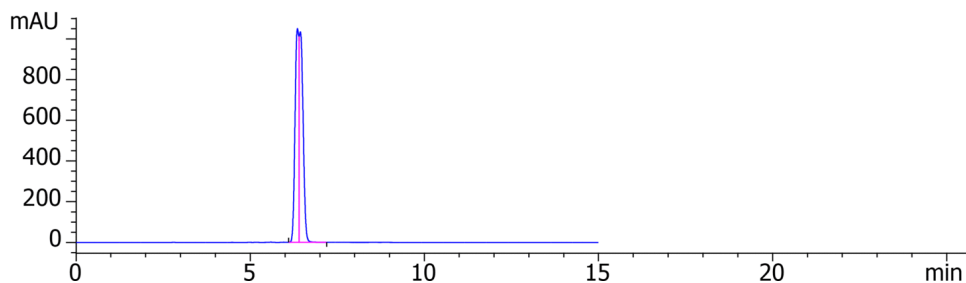
**Flow Rate:** 1 mL/min

**Col. Temp.:** 25 °C

**Detection:** LC/UV (DAD, PDA) @ 254.000000000 nm (nanometers) (ambient)

**Analyst Note:** 2 mg/mL in Ethanol

Luxi-Cellulose5



Products used in this application:



### ANALYTES:

- 1 Diniconazole  
Retention Time: 6.357 min
- 2 Diniconazole  
Retention Time: 6.442 min

