

HPLC Application

ID No.: 25376

Lux i-Amylose-1 Separation for Indoprofen

Column: Lux[®] 5 µm i-Amylose-1, LC Column 250 x 4.6 mm, Ea

Dimensions: 250 x 4.6 mm ID

Order No: 00G-4762-E0

Elution Type: Isocratic

Eluent A: Acetonitrile

Eluent B: Formic Acid

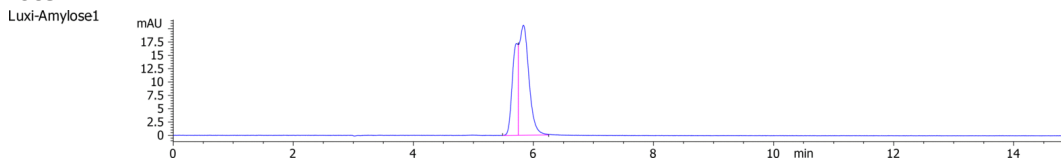
Gradient Profile:	Step No.	Time (min)	Pct A	Pct B
	1	7.5	100	0.1

Flow Rate: 1 mL/min

Col. Temp.: 25 °C

Detection: LC/UV (DAD, PDA) @ 254.000000000 nm (nanometers) (ambient)

Analyst Note: 2 mg/mL in Ethanol



Products used in this application:



ANALYTES:

1 Indoprofen

Retention Time: 5.72 min

2 Indoprofen

Retention Time: 5.835 min

