

HPLC Application

ID No.: 25392

Lux 5 μ i-Amylose-3 Strong Solvent Stability: trans-Stilbene Oxide

Column: Lux[®] 5 μ m i-Amylose-3, LC Column 250 x 4.6 mm, Ea

Dimensions: 250 x 4.6 mm ID

Order No: 00G-4779-E0

Elution Type: Isocratic

Eluent A: Hexane

Eluent B: Isopropanol

Eluent C: Diethylamine

Gradient Profile:	Step No.	Time (min)	Pct A	Pct B	Pct C
	1	15	80	20	0.1

Flow Rate: 0.5 mL/min

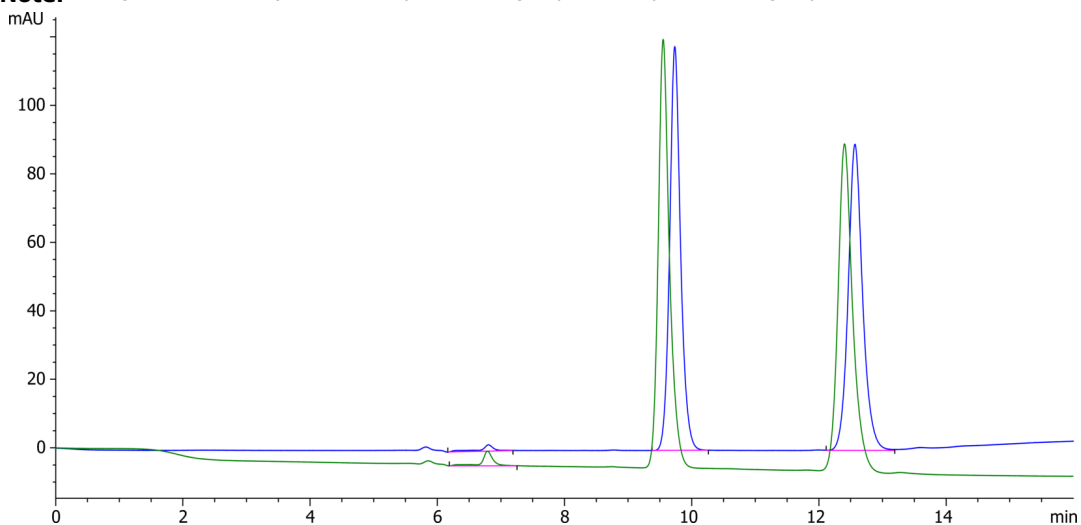
Col. Temp.: 25 °C

Detection: LC/UV (DAD, PDA) @ 220.000000000 nm (nanometers) (ambient)

Analyst Note: 2 mg/mL in Ethanol. Injections before (1st chromatogram) and after (2nd chromatogram) column was flushed with DCM and then THF.



Products used in this application:



ANALYTES:

- 1 trans-Stilbene Oxide
Retention Time: 9.733 min
- 2 trans-Stilbene Oxide
Retention Time: 12.566 min

