

HPLC Application

ID No.: 25407

22 Antibiotics by LCMS on Kinetex 2.6 μm PS C18 50x2.1mm

Column: Kinetex® 2.6 μm PS C18 100 Å, LC Column 50 x 2.1 mm, Ea

Dimensions: 50 x 2.1 mm ID

Order No: 00B-4780-AN

Elution Type: Gradient

Eluent A: 0.1% Formic Acid in Water

Eluent B: 0.1% Formic Acid in Acetonitrile

Gradient Profile:	Step No.	Time (min)	Pct A	Pct B
	1	0	97	3
	2	0.5	97	3
	3	5	0	100
	4	5.1	97	3
	5	8	97	3

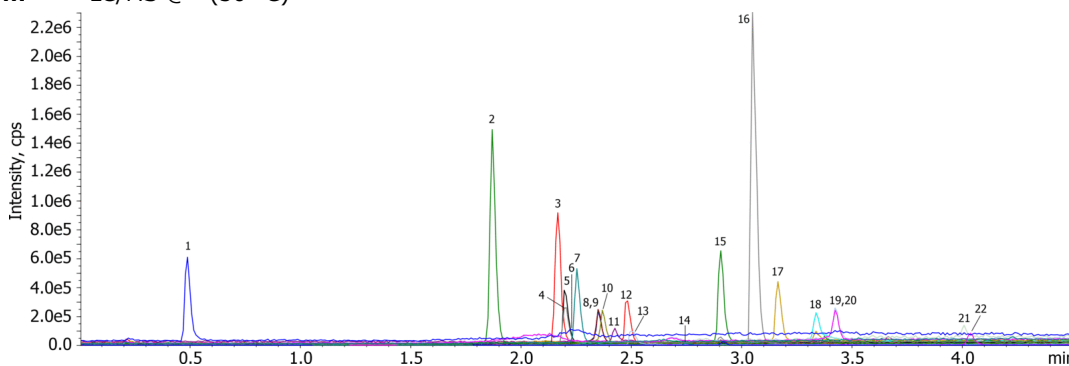
Flow Rate: 500 μL/min

Col. Temp.: 30 °C

Detection: LC/MS @ (30 °C)



Products used in this application:



22 Antibiotics by LCMS on Kinetex 2.6 µm PS C18 50x2.1mm

ANALYTES:

- 1 SULFAGUANIDINE
- 2 LINCOMYCIN
- 3 SULFAPYRIDINE
- 4 SULFATHIAZOLE
- 5 MARBOFLOXACIN
- 6 SULFAMERAZINE
- 7 CIPROFLOXACIN
- 8 FLORFENICOL
- 9 DANOFLOXACIN
- 10 ENROFLOXACIN
- 11 SULFAMONOMETHOXINE
- 12 DIFLOXACIN
- 13 VALNEMULIN
- 14 TYLOSIN A
- 15 SULFAMETHOXAZOLE
- 16 TIAMULIN
- 17 SULFAQUINOXALINE
- 18 TRIMETHOPRIM
- 19 OXOLINIC ACID
- 20 FLUMEQUINE
- 21 SULFADIMETHOXINE
- 22 RIFAXIMIN

