

## Artificial Sweeteners by LCMS

**Column:** Kinetex® 2.6 µm C18 100 Å, LC Column 100 x 2.1 mm, Ea

**Dimensions:** 100 x 2.1 mm ID

**Order No:** 00D-4462-AN

**Elution Type:** Gradient

**Eluent A:** Water

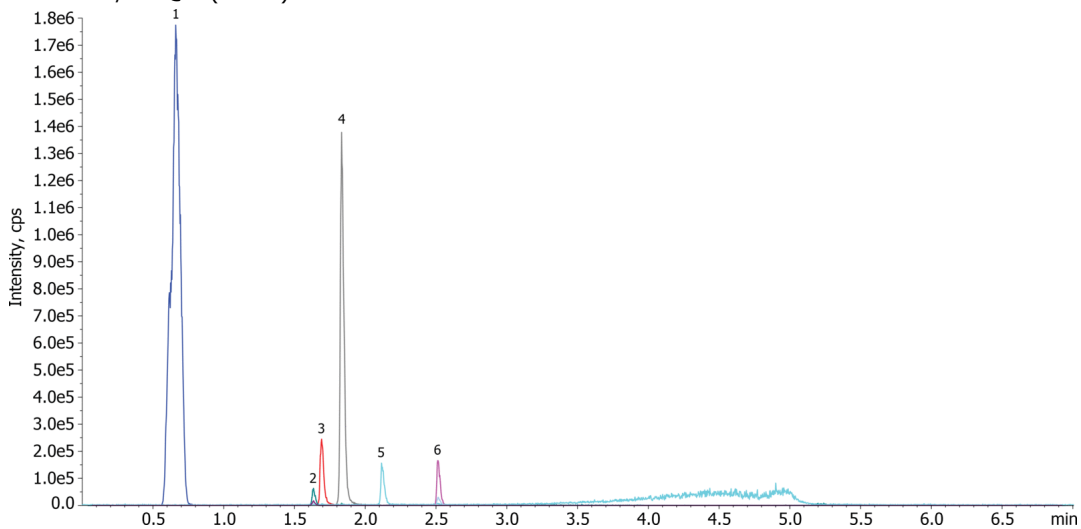
**Eluent B:** Acetonitrile

Gradient Profile:	Step No.	Time (min)	Pct A	Pct B
	1	0	97	3
	2	4	0	100
	3	4.1	97	3
	4	7	97	3

**Flow Rate:** 500 µL/min

**Col. Temp.:** 30 °C

**Detection:** LC/MS @ (30 °C)



### ANALYTES:

- 1** Acesulfame-K  
Retention Time: 0.67 min
- 2** Aspartame  
Retention Time: 1.7 min
- 3** Alitame  
Retention Time: 1.84 min
- 4** Neotame  
Retention Time: 2.52 min
- 5** Sucralose  
Retention Time: 1.63 min
- 6** Neohesperidine  
Retention Time: 2.12 min



Products used in this application:

