

HPLC Application

ID No.: 25479

Artificial Sweeteners by LCMS Kinetex 2.6u Polar C18 100x2.1mm

Column: Kinetex® 2.6 µm Polar C18 100 Å, LC Column 100 x 2.1 mm, Ea

Dimensions: 100 x 2.1 mm ID

Order No: 00D-4759-AN

Elution Type: Gradient

Eluent A: Water

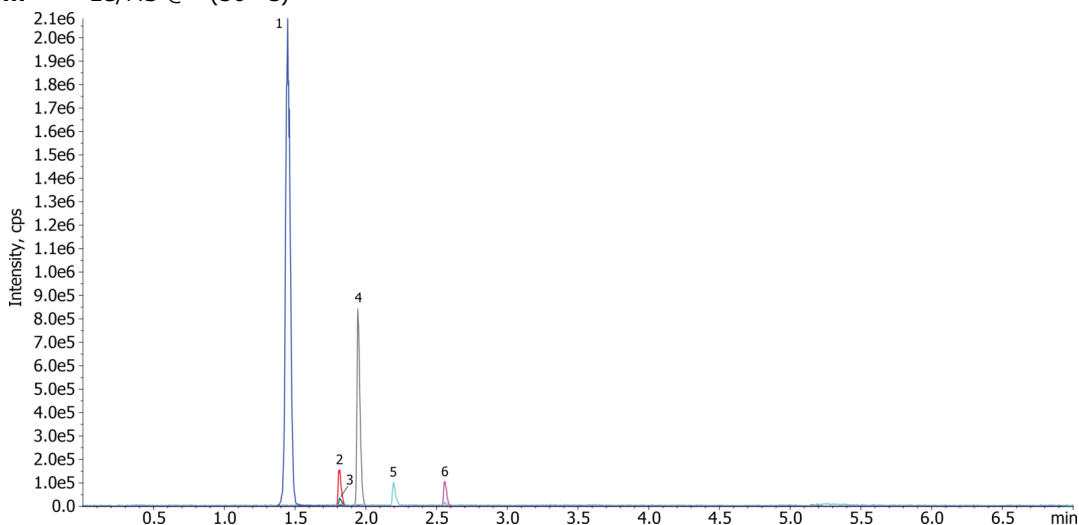
Eluent B: Acetonitrile

Gradient Profile:	Step No.	Time (min)	Pct A	Pct B
	1	0	97	3
	2	4	0	100
	3	4.1	97	3
	4	7	97	3

Flow Rate: 500 µL/min

Col. Temp.: 30 °C

Detection: LC/MS @ (30 °C)



Products used in this application:



ANALYTES:

- 1** Acesulfame-K
Retention Time: 1.45 min
- 2** Aspartame
Retention Time: 1.82 min
- 3** Alitame
Retention Time: 1.94 min
- 4** Neotame
Retention Time: 2.56 min
- 5** Sucralose
Retention Time: 1.81 min
- 6** Neohesperidine
Retention Time: 2.2 min

