

HPLC Application

ID No.: 25492

Artificial Sweeteners by LCMS, Acesulfame-K Overlay

Column: Kinetex® 2.6 µm PS C18 100 Å, LC Column 100 x 2.1 mm, Ea

Dimensions: 100 x 2.1 mm ID

Order No: 00D-4780-AN

Elution Type: Gradient

Eluent A: Water

Eluent B: Acetonitrile

Gradient Profile:	Step No.	Time (min)	Pct A	Pct B
	1	0	97	3
	2	4	0	100
	3	4.1	97	3
	4	7	97	3

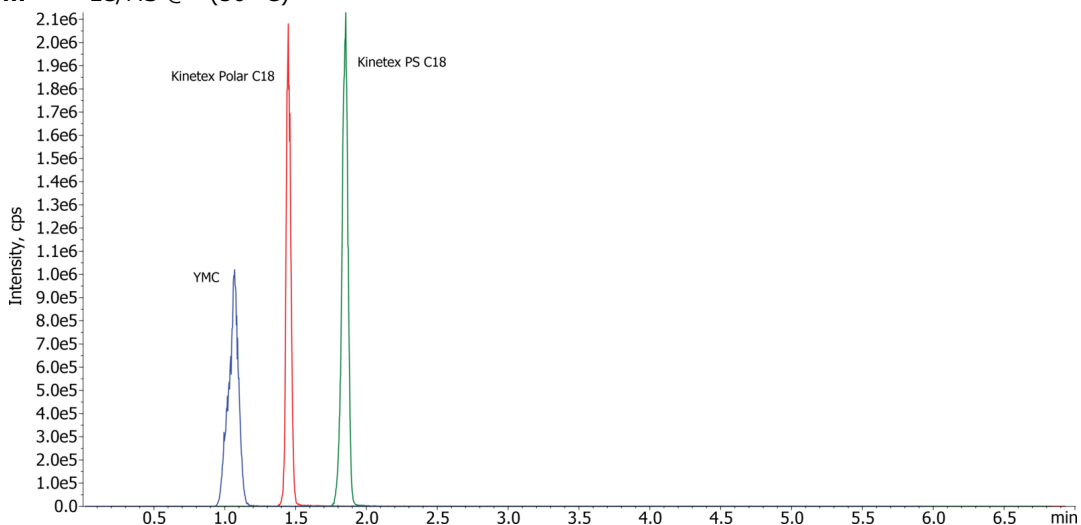
Flow Rate: 500 µL/min

Col. Temp.: 30 °C

Detection: LC/MS @ (30 °C)



Products used in this application:



ANALYTES: