

## Tricyclic Antidepressants Panel by LC-MS/MS with Kinetex 2.6 um PS C18

**Column:** Kinetex® 2.6 µm PS C18 100 Å, LC Column 100 x 2.1 mm, Ea

**Dimensions:** 100 x 2.1 mm ID

**Order No:** 00D-4780-AN

**Elution Type:** Gradient

**Eluent A:** 0.1% Formic Acid in Water

**Eluent B:** 0.1% Formic Acid in Acetonitrile

Gradient Profile:	Step No.	Time (min)	Pct A	Pct B
	1	0	90	10
	2	6	50	50
	3	6.1	90	10
	4	8	90	10

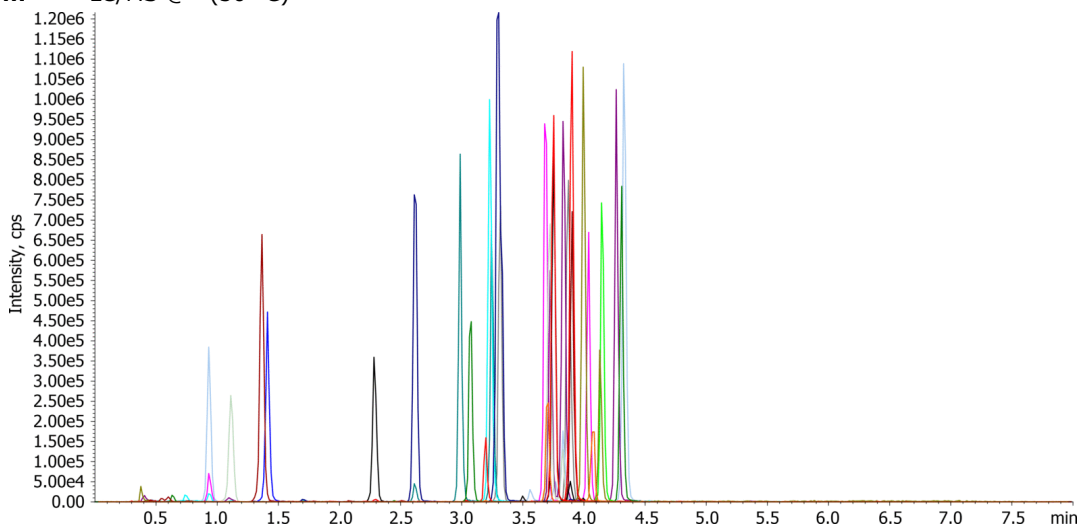
**Flow Rate:** 500 µL/min

**Col. Temp.:** 30 °C

**Detection:** LC/MS @ (30 °C)



Products used in this application:



## Tricyclic Antidepressants Panel by LC-MS/MS with Kinetex 2.6 um PS C18

### ANALYTES:

- 1 1,3-chlorphenylpiperazine 1
- 2 Amitriptyline 1
- 3 Amoxapine 1
- 4 Hydroxybupropion 1
- 5 Citalopram 1
- 6 Citalopram-D6
- 7 Nortriptyline 1
- 8 Nortriptyline-D3
- 9 Desmethylcitalopram 1
- 10 Clomipramine 1
- 11 Desmethylclomipramine 1
- 12 Desipramine 1
- 13 Doxepin 1
- 14 Desmethyldoxepin 1
- 15 Duloxetine 1
- 16 Fluoxetine 1
- 17 Norfluoxetine 1
- 18 Fluvoxamine 1
- 19 Norfluvoxamine 1
- 20 Imipramine 1
- 21 Imipramine-D3
- 22 Maprotiline 1
- 23 Mirtazapine 1
- 24 Paroxetine 1
- 25 Protriptyline 1
- 26 Sertraline 1
- 27 Desmethylsertraline 1
- 28 Trazodone 1
- 29 Trazodone-D6
- 30 Trimipramine 1
- 31 Venlafaxine 1
- 32 Venlafaxine-D6
- 33 Desmethylvenlafaxine 1
- 34 Desmethylvenlafaxine-D6
- 35 Vilazodone 1
- 36 Vortioxetine 1

