

# HPLC Application

ID No.: 25497

## Bile Acids in LCMS, Kinetex 2.6u PS C18 100x2.1mm (B-muricholic acid, A-muricholic acid and Hyocholic acid)

**Column:** Kinetex<sup>®</sup> 2.6  $\mu$ m PS C18 100 Å, LC Column 100 x 2.1 mm, Ea

**Dimensions:** 100 x 2.1 mm ID

**Order No:** 00D-4780-AN

**Elution Type:** Gradient

**Eluent A:** 10mM Ammonium Acetate in Water

**Eluent B:** Acetonitrile

Gradient Profile:	Step No.	Time (min)	Pct A	Pct B
	1	0	80	20
	2	6	60	40
	3	6.1	80	20
	4	9	80	20

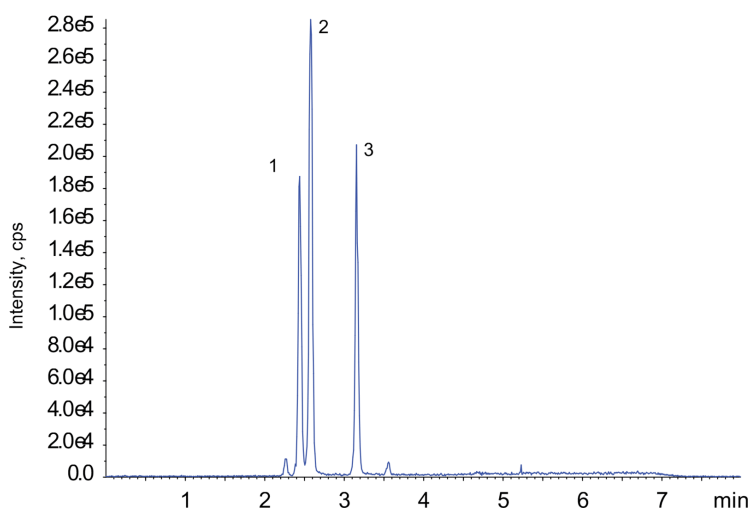
**Flow Rate:** 500  $\mu$ L/min

**Col. Temp.:** 30 °C

**Detection:** LC/MS @ (30 °C)  
25497



Products used in this application:



# HPLC Application

ID No.: 25497

**Bile Acids in LCMS, Kinetex 2.6u PS C18 100x2.1mm (B-muricholic acid, A-muricholic acid and Hyocholic acid)**

## **ANALYTES:**

- 1** a-muricholic
- 2** b-muricholic
- 3** hyocholic
- 4**
- 5**
- 6**
- 7**
- 8**
- 9**
- 10**

