

HPLC Application

ID No.: 25512

Imipramine and Amitriptyline Loading on Kinetex 2.6µm PS C18 50x4.6mm using Waters ACQUITY I Class UPLC

Column: Kinetex[®] 2.6 µm PS C18 100 Å, LC Column 50 x 4.6 mm, Ea

Dimensions: 50 x 4.6 mm ID

Order No: 00B-4780-E0

Elution Type: Gradient

Eluent A: Methanol

Eluent B: 0.1% Formic Acid in ACN

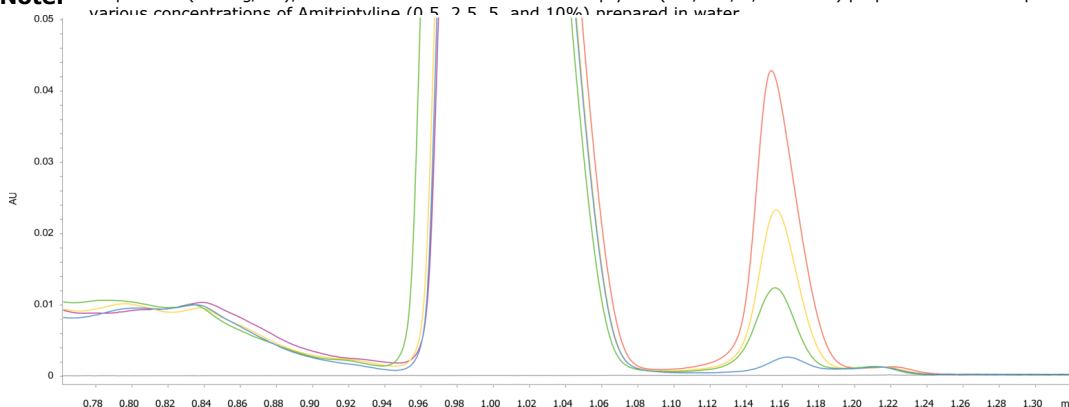
Gradient Profile:	Step No.	Time (min)	Pct A	Pct B
	1	0	75	25
	2	2	65	35
	3	3	5	95
	4	3.1	75	25
	5	5	75	25

Flow Rate: 1.85 mL/min

Col. Temp.: 30 °C

Detection: LC/UV (DAD, PDA) @ 254.0000000000 (30 °C)

Analyst Note: Imipramine (0.5 mg/mL), with various concentrations of Amitriptyline (0.5, 2.5, 5, and 10%) prepared in water. Imipramine (0.5 mg/mL), with various concentrations of Amitriptyline (0.5, 2.5, 5, and 10%) prepared in water.



Products used in this application:



ANALYTES:

- 1 Imipramine
- 2 Amitriptyline

