

# HPLC Application

ID No.: 25524

## Berberine extracted from Goldenseal pill on Kinetex PS-C18

**Column:** Kinetex<sup>®</sup> 2.6 µm PS C18 100 Å, LC Column 50 x 4.6 mm, Ea

**Dimensions:** 50 x 4.6 mm ID

**Order No:** 00B-4780-E0

**Elution Type:** Gradient

**Eluent A:** 20mM Potassium dihydrogen phosphate pH 4.6

**Eluent B:** Acetonitrile

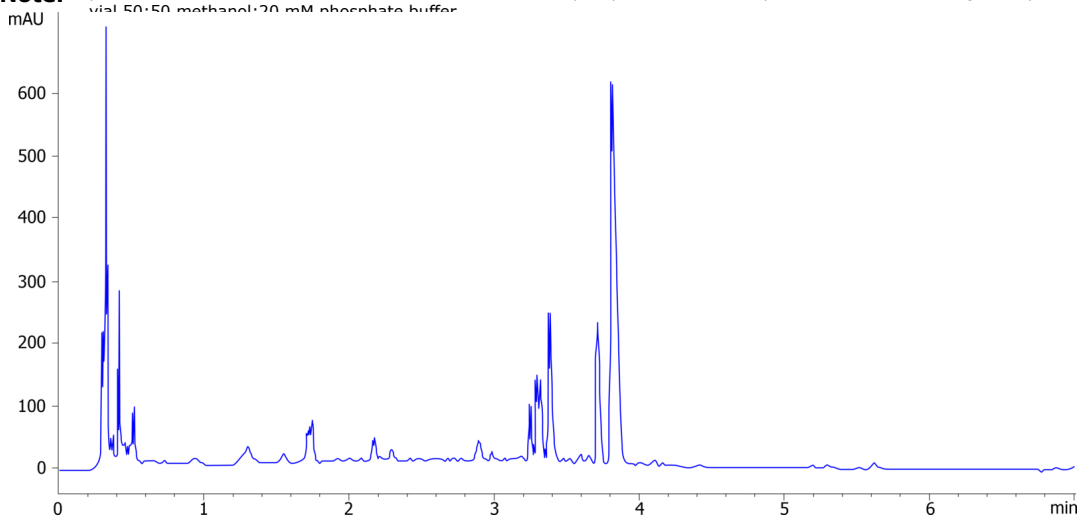
| Gradient Profile: | Step No. | Time (min) | Pct A | Pct B |
|-------------------|----------|------------|-------|-------|
|                   | 1        | 0          | 90    | 10    |
|                   | 2        | 7          | 35    | 65    |
|                   | 3        | 8          | 35    | 65    |
|                   | 4        | 8.5        | 90    | 10    |
|                   | 5        | 10         | 90    | 10    |

**Flow Rate:** 1.5 mL/min

**Col. Temp.:** 23 °C

**Detection:** LC/UV (DAD, PDA) @ 235.000000000 nm (nanometers) (ambient)

**Analyst Note:** pill crushed and dissolved in 10mls 50:50 methanol:20 mM phosphate buffer. Sample vortexed and centrifuged. Supernatant transferred to HPLC vial 50:50 methanol:20 mM phosphate buffer



### ANALYTES:

1 berberine

Retention Time: 3.805 min



Products used in this application:

