

## ASTM D5441 (High Concentration Mix-Sigma Aldrich 47942) on ZB-DHA-PONA 50m x 0.20mm x 0.50µm

**Column:** Zebron ZB-DHA-PONA, GC Cap. Column 50m x 0.20mm x 0.5µm , Ea

**Phase:**

**Dimensions:** 50 meters x 0.2 mm x 0.5 µm

**Order No:** 7JE-G042-17

**Oven Profile:** 40°C for 13 min to 180°C @ 10°C/min 180°C for 3 min

**Carrier Gas:** Constant Flow Helium, 0.9 mL/min

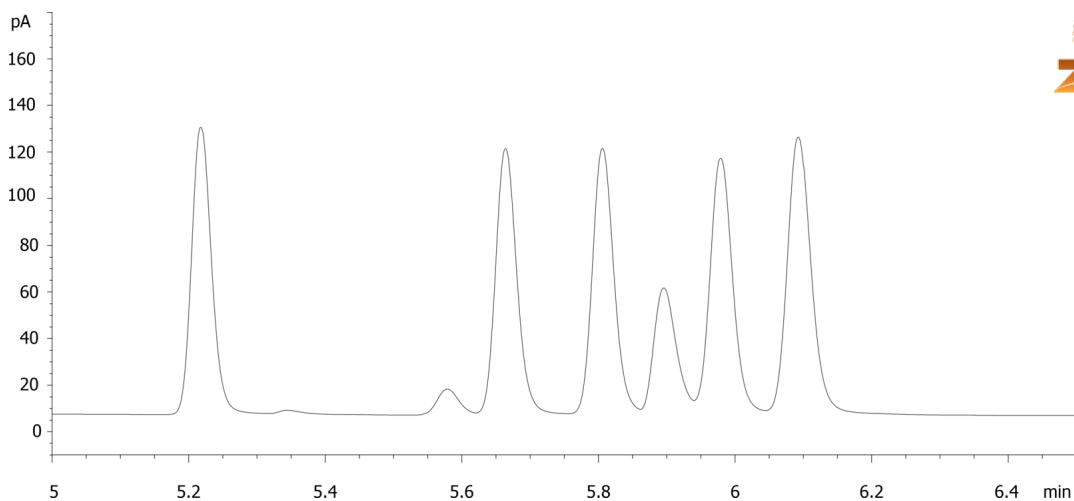
**Injection:** Split 50:1 0.5 µL @ 200°C

**Detection:** GC/FID (250°C)

**Analyst Note:** Resolution between trans-2-pentene/tert-butanol and tert-butanol/cis-2-pentene meets the ASTM Method D5441



Products used in this application:



## ASTM D5441 (High Concentration Mix-Sigma Aldrich 47942) on ZB-DHA-PONA 50m x 0.20mm x 0.50µm

### ANALYTES:

- 1 Methanol
- 2 Iso-Pentane
- 3 n-Pentane
- 4 Trans-2-Pentene
- 5 Tert-Butanol
- 6 Cis-2-Pentene
- 7 2-Methyl-2-Butene
- 8 MTBE
- 9 Tert-Butyl Ethyl ether
- 10 Tert-Amyl methyl ether
- 11 2,4,4-Trimethyl-1-pentene
- 12 4,4-Dimethyl-2-neopenyl-1-pentene (triisobutylene)
- 13 2,2,4,6,6-Pentamethyl-3-heptene (triisobutylene)

