

# HPLC Application

ID No.: 25564

## Kinetex PS C18 100 % Aqueous Stability Test

**Column:** Kinetex<sup>®</sup> 2.6  $\mu$ m PS C18 100 Å, LC Column 50 x 4.6 mm, Ea

**Dimensions:** 50 x 4.6 mm ID

**Order No:** 00B-4780-E0

**Elution Type:** Isocratic

**Eluent A:** 20mM Potassium Phosphate Monobasic pH 2.5

| Gradient | Step No. | Time (min) | Pct A |
|----------|----------|------------|-------|
| Profile: | 1        | 10         | 100   |

**Flow Rate:** 1.5 mL/min

**Col. Temp.:** 30 °C

**Detection:** LC/UV (DAD, PDA) @ 270.000000000 nm (nanometers) (ambient)

**Analyst Note:** Primary Scientist: Sy Do

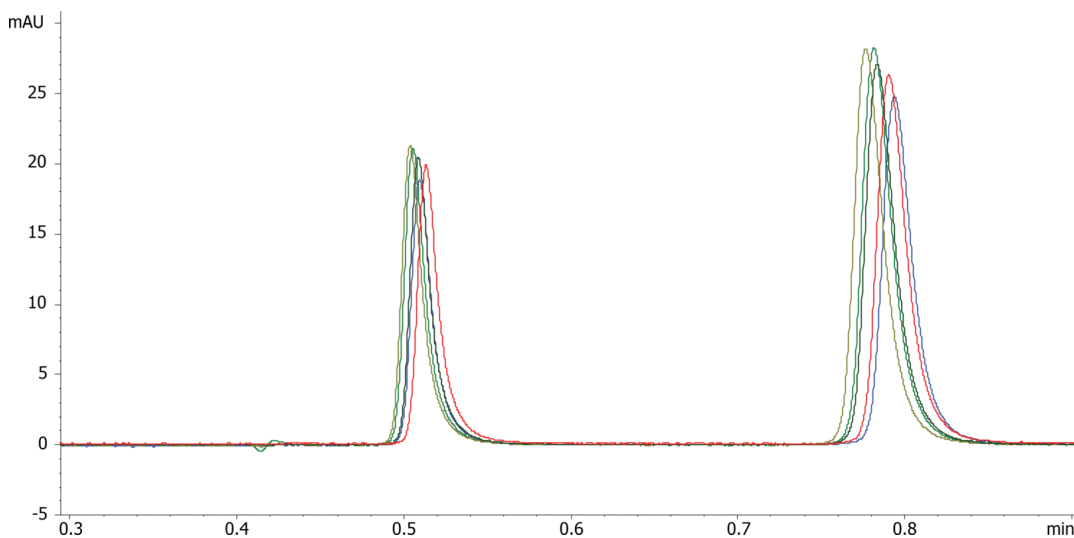
Supporting Scientist: Tran

Stock: Epinephrine: 1mg/ml and Dopamine: 1mg/ml in buffer

The final sample is a mixture of the two stock sample solutions and final conc is at 0.5 mg/mL.



Products used in this application:



### ANALYTES:

**1** Epinephrine

Retention Time: 0.51 min

**2** Dopamine

Retention Time: 0.794 min

