

# HPLC Application

ID No.: 2558

## Drugs in Plasma

**Column:** Luna<sup>®</sup> 5  $\mu$ m C18(2) 100 Å, LC Column 150 x 2 mm, Ea

**Dimensions:** 150 x 2 mm ID

**Order No:** 00F-4252-B0

**Elution Type:** Isocratic

**Eluent A:** 0.01 M Sodium phosphate

**Eluent B:** Acetonitrile

Gradient Profile:	Step No.	Time (min)	Pct A	Pct B
	1	0	50	50

**Flow Rate:** 0.3 mL/min

**Col. Temp.:** ambient

**Detection:** UV-Vis Abs.-Variable Wave.(UV) @ 224 nm (ambient)

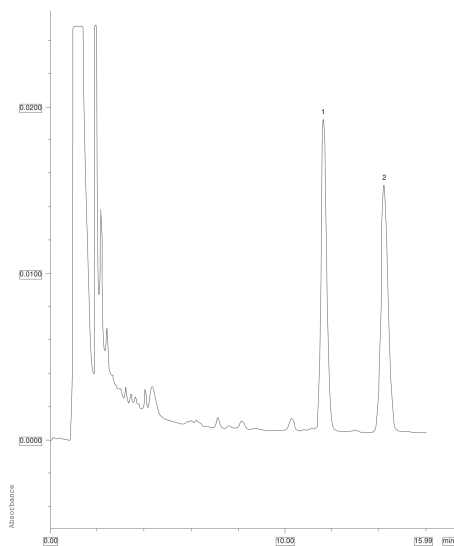
**Analyst Note:** SecurityGuard<sup>™</sup> Guard Cartridge System extends column lifetime.

- SecurityGuard Cartridges, C18 4 x 2.0mm, 10/Pk Part No.: AJ0-4286

- Holder Part No.: KJ0-4282



Products used in this application:



### ANALYTES:

- 1 Desmethyldiazepam
- 2 Midazolam