

HPLC Application

ID No.: 2561

Glucagon Peptides

Column: Luna® 5 µm C8(2) 100 Å, LC Column 150 x 4.6 mm, Ea

Dimensions: 150 x 4.6 mm ID

Order No: 00F-4249-E0

Elution Type: Gradient

Eluent A: 0.085% Phosphoric acid and 0.3% TEA, pH 7.0 with NaOH

Eluent B: Solution A/Acetonitrile (40:60)

Gradient Profile:	Step No.	Time (min)	Pct A	Pct B
	1	0	55	45
	2	30	32	68

Flow Rate: 1.5 mL/min

Col. Temp.: ambient

Detection: UV-Vis Abs.-Variable Wave.(UV) @ 210 nm (ambient)

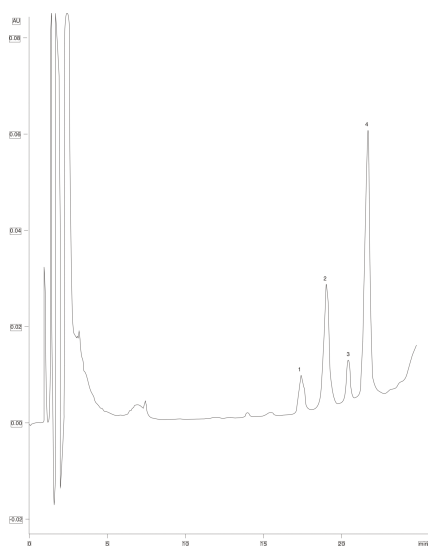
Analyst Note: SecurityGuard™ Guard Cartridge System extends column lifetime.

- SecurityGuard Cartridges, C8 4 x 3.0mm, 10/Pk Part No.: AJ0-4290

- Holder Part No.: KJ0-4282



Products used in this application:



ANALYTES:

- 1 GLP-1 (37 aa)
- 2 GLP-1 (36 aa)
- 3 GLP-2 (31 aa)
- 4 GLP-2 (30 aa)

