

## Alkylsulfonate Esters on Luna Omega Polar C18 - TFA

**Column:** Luna Omega 1.6 um Polar C18 100 A LC Column 50 x 2.1 mm, Ea

**Dimensions:** 50 x 2.1 mm ID

**Order No:** 00B-4748-AN

**Elution Type:** Gradient

**Eluent A:** 0.1% TFA in Water

**Eluent B:** Acetonitrile

Gradient Profile:	Step No.	Time (min)	Pct A	Pct B
	1	0	90	10
	2	5	10	90
	3	5.1	10	90
	4	6	90	10
	5	7	90	10

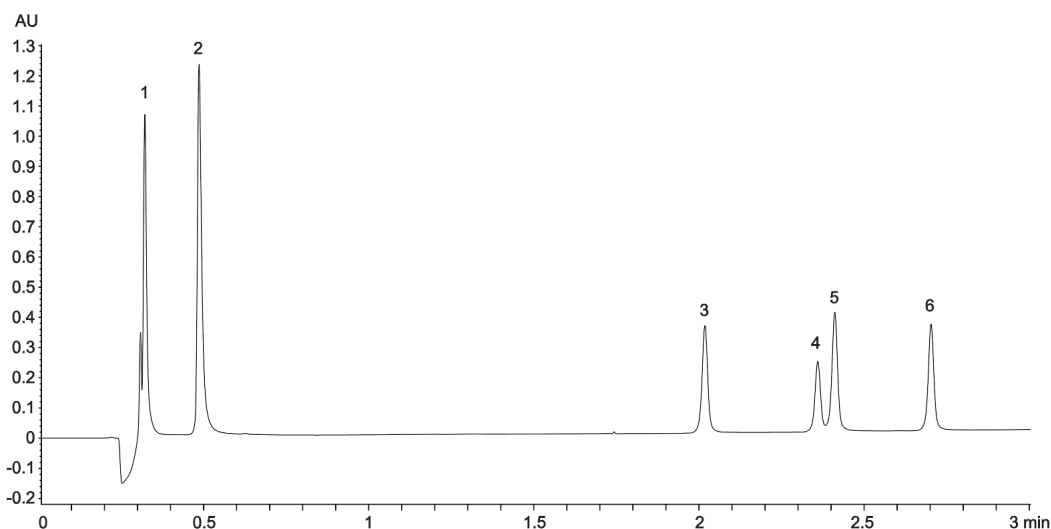
**Flow Rate:** 0.6 mL/min

**Col. Temp.:** 25 °C

**Detection:** LC/UV (DAD, PDA) @ 220.000000000 nm (nanometers) (ambient)



Products used in this application:



### ANALYTES:

- 1** Benzenesulfonic acid  
Retention Time: 0.33 min
- 2** p-toluene sulfonic acid  
Retention Time: 0.49 min
- 3** Methylbenzene sulfonate  
Retention Time: 2.02 min
- 4** Ethyl benzene sulfonate  
Retention Time: 2.36 min
- 5** Methyl p-toluene sulfonate  
Retention Time: 2.41 min
- 6** Ethyl p-toluene sulfonate  
Retention Time: 2.7 min

