

## Methanol/Acetonitrile (80:20) Impact on Phenyl Selectivity for Kinetex 2.6 µm Biphenyl

**Column:** Kinetex® 2.6 µm Biphenyl 100 Å, LC Column 50 x 4.6 mm, Ea

**Dimensions:** 50 x 4.6 mm ID

**Order No:** 00B-4622-E0

**Elution Type:** Gradient

**Eluent A:** 0.1% Formic acid in Water

**Eluent B:** 0.1% Formic acid in Methanol/Acetonitrile (80:20)

Gradient Profile:	Step No.	Time (min)	Pct A	Pct B
	1	0	85	15
	2	4	5	95

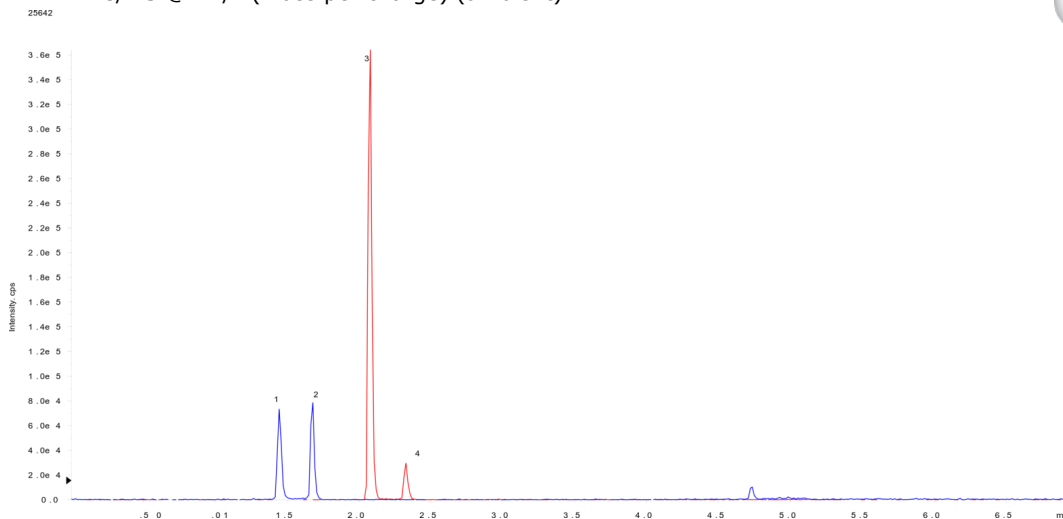
**Flow Rate:** 800 µL/min

**Col. Temp.:** ambient

**Detection:** LC/MS @ m/z (mass per charge) (ambient)



Products used in this application:



### ANALYTES:

- 1** Morphine  
Retention Time: 1.45 min
- 2** Hydromorphone  
Retention Time: 1.68 min
- 3** Codeine  
Retention Time: 2.08 min
- 4** Hydrocodone  
Retention Time: 2.3 min