

Methanol/Acetonitrile (0:100) Impact on Phenyl Selectivity for Kinetex 2.6 µm Biphenyl

Column: Kinetex® 2.6 µm Biphenyl 100 Å, LC Column 50 x 4.6 mm, Ea

Dimensions: 50 x 4.6 mm ID

Order No: 00B-4622-E0

Elution Type: Gradient

Eluent A: 0.1% Formic acid in Water

Eluent B: 0.1% Formic acid in Acetonitrile

Gradient Profile:	Step No.	Time (min)	Pct A	Pct B
	1	0	85	15
	2	4	5	95

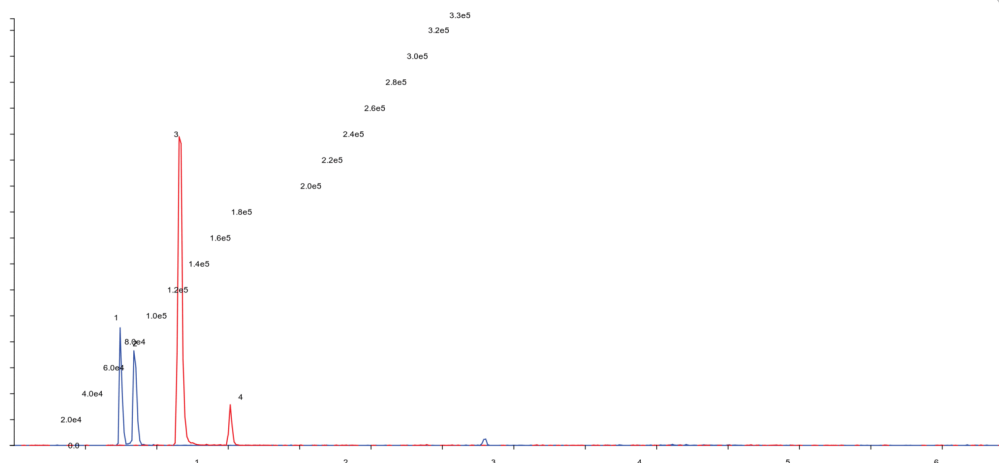
Flow Rate: 800 µL/min

Col. Temp.: ambient

Detection: LC/MS @ m/z (mass per charge) (ambient)



Products used in this application:



ANALYTES:

- 1 Morphine
Retention Time: 0.75 min
- 2 Hydromorphone
Retention Time: 0.84 min
- 3 Codeine
Retention Time: 1.16 min
- 4 Hydrocodone
Retention Time: 1.51 min

