

## Methanol/Acetonitrile (40:60) Impact on Phenyl Selectivity for Kinetex 2.6 µm Phenyl-Hexyl

**Column:** Kinetex® 2.6 µm Phenyl-Hexyl 100 Å, LC Column 50 x 4.6 mm, Ea

**Dimensions:** 50 x 4.6 mm ID

**Order No:** 00B-4495-E0

**Elution Type:** Gradient

**Eluent A:** 0.1% Formic acid in Water

**Eluent B:** 0.1% Formic acid in Methanol/Acetonitrile (40:60)

Gradient Profile:	Step No.	Time (min)	Pct A	Pct B
	1	0	85	15
	2	4	5	95

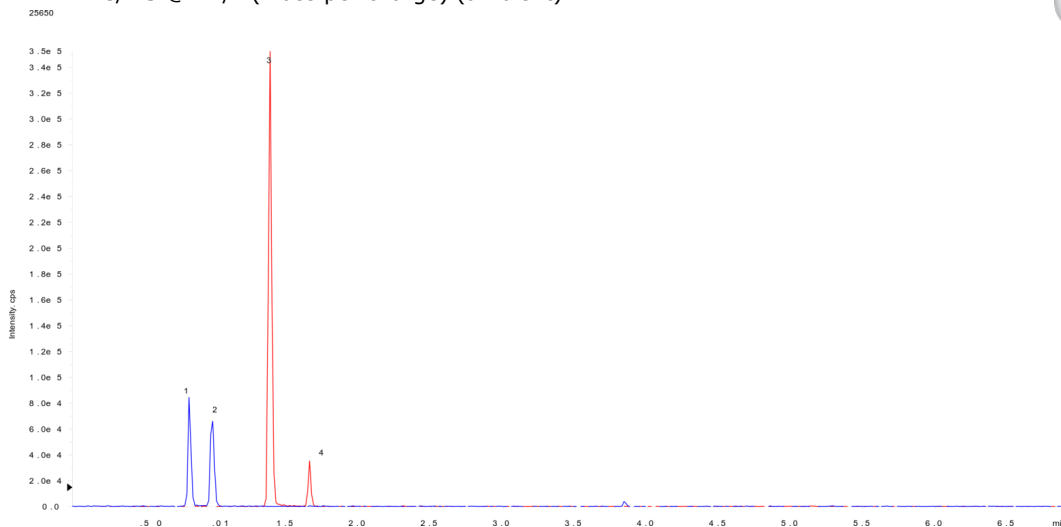
**Flow Rate:** 800 µL/min

**Col. Temp.:** ambient

**Detection:** LC/MS @ m/z (mass per charge) (ambient)



Products used in this application:



### ANALYTES:

- 1** Morphine  
Retention Time: 0.81 min
- 2** Hydromorphone  
Retention Time: 0.97 min
- 3** Codeine  
Retention Time: 1.38 min
- 4** Hydrocodone  
Retention Time: 1.65 min

