

# HPLC Application

ID No.: 25665

## Berberine Standard on Kinetex PS-C18

**Column:** Kinetex® 2.6 µm PS C18 100 Å, LC Column 50 x 4.6 mm, Ea

**Dimensions:** 50 x 4.6 mm ID

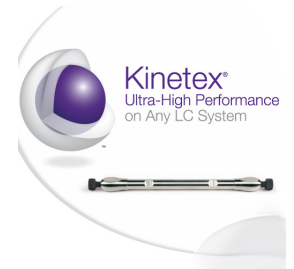
**Order No:** 00B-4780-E0

**Elution Type:** Isocratic

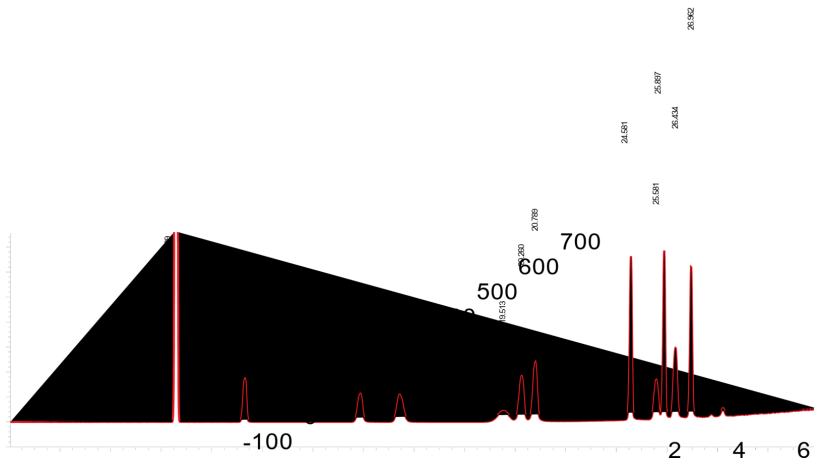
**Gradient Profile:**

Step No.	Time (min)	Pct A
1	0	100
2	6	0

**Col. Temp.:** 23 °C  
**Detection:**



Products used in this application:



**ANALYTES:**