

HPLC Application

ID No.: 25667

Ivermectin and Related Substances Test Solution on Luna 3 µm C18(2) 150 x 4.6 mm - Ph. Eur. Monograph 1336

Column: Luna® 3 µm C18(2) 100 Å, LC Column 150 x 4.6 mm, Ea

Dimensions: 150 x 4.6 mm ID

Order No: 00F-4251-E0

Elution Type: Isocratic

Eluent A: Water

Eluent B: Methanol

Eluent C: Acetonitrile

Gradient Profile:	Step No.	Time (min)	Pct A	Pct B	Pct C
	1	0	15	34	51

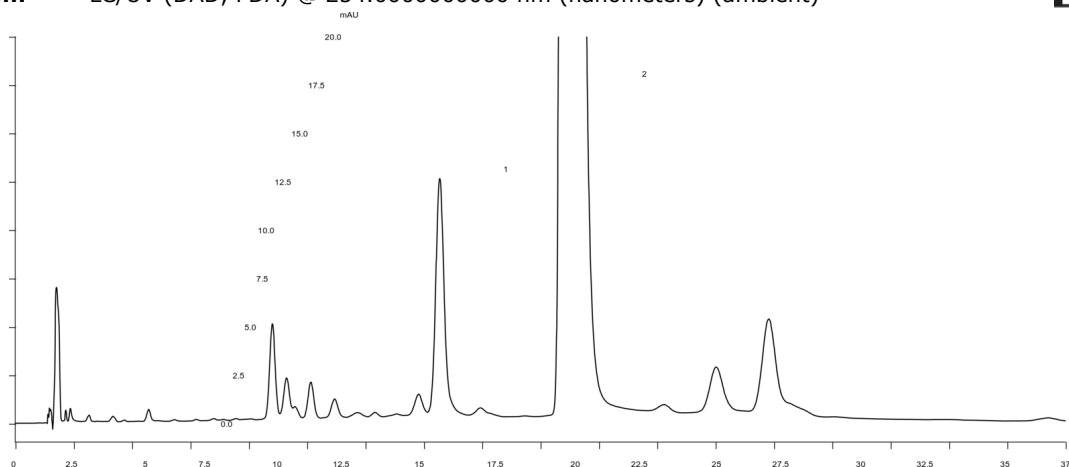
Flow Rate: 1 mL/min

Col. Temp.: 25 °C

Detection: LC/UV (DAD, PDA) @ 254.000000000 nm (nanometers) (ambient)



Products used in this application:



ANALYTES:

1 H2B1b

Retention Time: 18.188 min

2 H2B1a

Retention Time: 23.673 min

