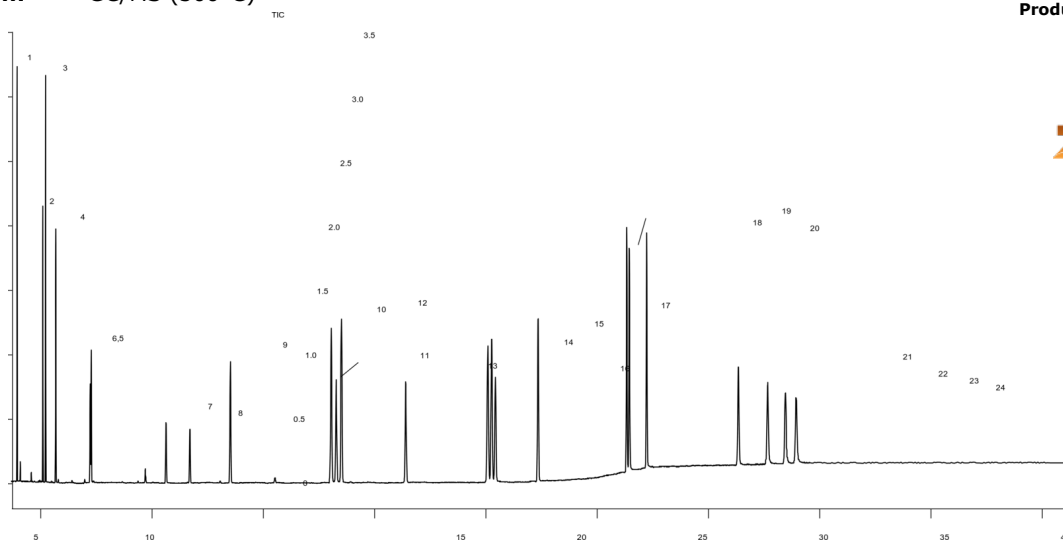


## GC-MS Analysis of EU 15+1 & EPA 610 using a Zebron ZB-PAH-EU GC Column

**Column:** Zebron ZB-PAH-EU, GC Cap. Column 30m, 0.25mm, 0.20  $\mu$ m, Ea  
**Phase:**  
**Dimensions:** 30 meters x 0.25 mm x 0.2  $\mu$ m  
**Order No:** 7HG-G043-10  
**Oven Profile:** 45°C for .8 min to 200°C @ 45°C/min to 226°C @ 3°C/min to 320°C @ 10°C/min 320°C for 20 min  
**Carrier Gas:** Constant Pressure Helium, 24 psi  
**Injection:** Split 5:1 1  $\mu$ L @ 330°C  
**Detection:** GC/MS (300°C)



Products used in this application:



## GC-MS Analysis of EU 15+1 & EPA 610 using a Zebron ZB-PAH-EU GC Column

### ANALYTES:

- 1 Naphthalene
- 2 Acenaphthylene
- 3 Acenaphthene
- 4 Fluorene
- 5 Phenanthrene
- 6 Anthracene
- 7 Flouranthene
- 8 Pyrene
- 9 Benzo[c]fluorene
- 10 Benzo[a]anthracene
- 11 Cyclopenta[c,d]pyrene
- 12 Chrysene
- 13 5-Methylchrysene
- 14 Benzo[b]fluoranthene
- 15 Benzo[k]fluoranthene
- 16 Benzo[j]fluoranthene
- 17 Benzo[a]pyrene
- 18 Indeno[1,2,3-cd]pyrene
- 19 Dibenz[a,h]anthracene
- 20 Benzo[g,h,i]perylene
- 21 Dibenzo[a,l]pyrene
- 22 Dibenzo[a,e]pyrene
- 23 Dibenzo[a,i]pyrene
- 24 Dibenzo[a,h]pyrene

